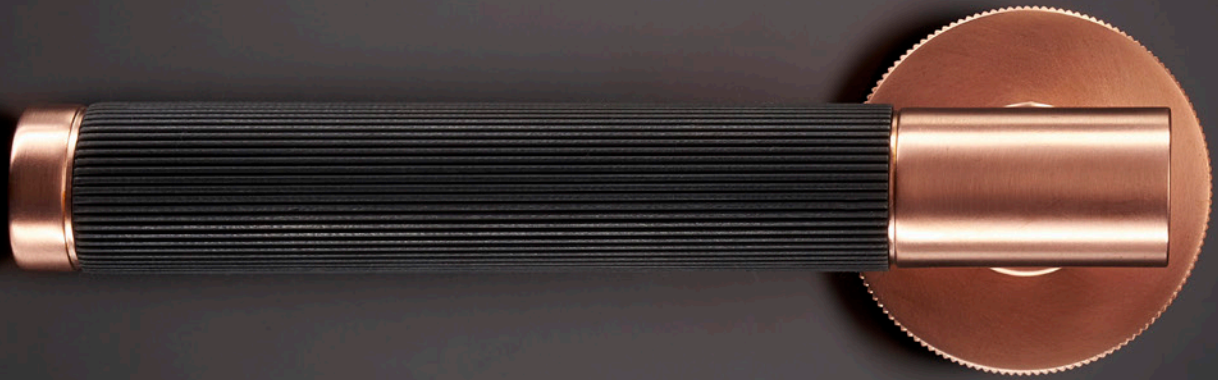




ALLART PRECISION®



Designed & Manufactured in Birmingham, England

## ALLART PRECISION®

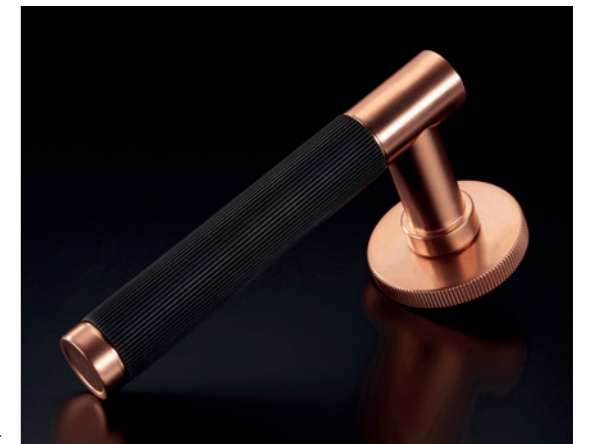
Frank Allart design and manufacture high quality architectural hardware continually developing and introducing new designs, our latest being the Allart Precision range.

A collection of fine cut hardware featuring engineered knurled patterns and precision cuts, suited through each design.

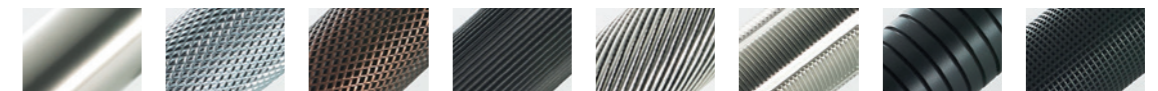
Start by selecting the door Lever, Knob or T-Knob from an array of different designs, end details and finishes. Then select matching turn and releases, escutcheons, centre door knobs, door pulls, cabinet knobs, pulls and t-pulls, and even window handles - so you can take one design theme and use it throughout your entire project.

Door Levers, Knobs and T-Knobs can also be paired with our complementary plain, bevelled edge or stepped edge plates from our Allart Select backplate range, offering many different operating and locking functions.

Precision products are available in over 30 different finishes & patinas, with the option to mix the finish across the product. Our finishes are skillfully created and applied by our experienced craftspeople to the highest possible standards to meet the aspirations of today's discerning customer.



- SMOOTH.
- DIAMOND KNURL.
- DIAMOND MESH.
- LINEAR.
- SPIRAL.
- STARBURST.
- ROTOR.
- GROOVE.
- SQUARE MESH.



CREATE • INSPIRE • ADORE

ALLART PRECISION®

# SMOOTH

Grip ref. G01  
Shown in Satin Brass

DOOR LEVER  
7745  
ROSETTE  
7843



DOOR LEVER  
7748  
ROSETTE  
7843



CABINET T-PULL  
1387



DOOR STOP  
2131



THUMB TURN  
7953/T41



COIN RELEASE  
7953CR



DOOR KNOB  
7601  
ROSETTE  
7843



CENTRE DOOR  
KNOB  
2571



CABINET PULL  
1427



CABINET KNOBS  
0651



ALLART PRECISION®

# DIAMOND KNURL

Grip ref. G02  
Shown in Pearl Chrome

DOOR LEVER  
**7748**  
SQUARE PLATE  
**5900**

DOOR LEVER  
**7745**  
ROSETTE  
**7829**

DOOR T-KNOB  
**7675**  
ROSETTE  
**7829**

CABINET KNOBS  
**0622**  
shown on Smooth  
Rosette

THUMB TURN  
**7949/T42**

COIN RELEASE  
**7949CR**

CENTRE DOOR  
KNOB  
**2572**

DOOR KNOB  
**7602**  
ROSETTE  
**7829**

CABINET PULL  
**1426**

CABINET PULL  
**1426**

CABINET T-PULL  
**1386**  
shown on Smooth  
Rosette

DOOR STOP  
**2132**

ALLART PRECISION®

# DIAMOND MESH

Grip ref. G03  
Shown in Chestnut Bronze



CENTRE DOOR  
KNOB  
2573

TILT & TURN  
HANDLE  
0400

BELL PUSH  
7864

ESCUTCHEON  
7391

DOOR STOP  
2133

CABINET T-PULL  
1384  
shown on Smooth  
Rosette

DOOR LEVER  
7745  
ROSETTE  
7836

CABINET KNOB  
0623  
shown on Smooth  
Rosette

DOOR PULL  
1405

DOOR KNOB  
7603  
ROSETTE  
7836

ALLART PRECISION®

# LINEAR

Grip ref. G04  
Shown in Matt Black Nickel

CENTRE DOOR  
KNOB  
2574



DOOR KNOB  
7604  
ROSETTE  
7830



DOOR PULL  
1405



CABINET PULL  
1424  
shown on Smooth  
Rosette



CASEMENT FASTENER  
0317



DOOR STOP  
2134



DOOR LEVER  
7753  
ROSETTE  
7830



CABINET T-PULL  
1384  
shown on Smooth  
Rosette



CABINET KNOBS  
0624  
shown on Smooth  
Rosette



ESCUTCHEON  
7392



ALLART PRECISION®

# SPIRAL

Grip ref. G05 (all G05R in photograph)  
Paired with STARBURST Rosette  
Shown in Butlers Silver



DOOR STOP  
2139

DOOR LEVER  
7748  
ROSETTE  
7831

DOOR LEVER  
7745  
ROSETTE  
7831

CENTRE DOOR  
KNOB  
2579

DOOR KNOB  
7608  
ROSETTE  
7831

CABINET PULL  
1427

CABINET KNOBS  
0658

CABINET T-PULL  
1387

THUMB TURN  
7917/T48

BELL PUSH  
7869

COIN RELEASE  
7917CR

# ROTOR

Grip ref. G06  
Shown in Pearl Nickel



DOOR LEVER  
7748  
ROSETTE  
7840



CENTRE DOOR  
KNOB  
2576



CABINET PULL  
1427



DOOR LEVER  
7745  
ROSETTE  
7840



CABINET PULL  
1424



DOOR KNOB  
7610  
ROSETTE  
7840



CABINET KNOBS  
0619



CABINET T-PULL  
1387



DOOR STOP  
2136



BELL PUSH  
7867



THUMB TURN  
7921/T50



COIN RELEASE  
7921CR



ALLART PRECISION®

# GROOVE

Grip ref. G07  
Shown in Matt Black Chrome

CABINET PULL  
1424



CENTRE DOOR KNOB  
2577



DOOR KNOB  
7607  
ROSETTE  
7833



CABINET T-PULL  
1385



CABINET KNOBS  
0657



DOOR LEVER  
7748  
ROSETTE  
7833



DOOR LEVER  
7745  
ROSETTE  
7833



THUMB TURN  
7954/T47



DOOR STOP  
2138



COIN RELEASE  
7954CR

ALLART PRECISION®

# SQUARE MESH

Grip ref. G08  
Shown in Ebony Bronze



DOOR PULL  
1405



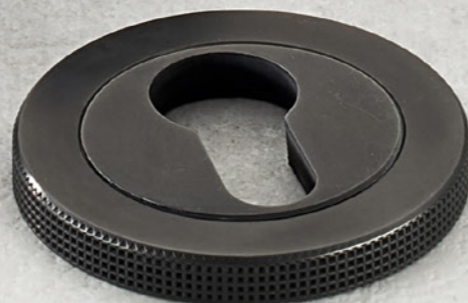
CABINET PULL  
1424



TILT & TURN T-HANDLE  
0430



DOOR STOP  
2137



ESCUTCHEON  
7397



CENTRE DOOR  
KNOB  
2578



DOOR LEVER  
7745  
ROSETTE  
7839



CABINET T-PULL  
1384  
shown on Smooth  
Rosette



CABINET KNOB  
0629  
shown on Smooth  
Rosette



DOOR KNOB  
7609  
ROSETTE  
7839

ALLART PRECISION®

## SQUARE MESH MIXED FINISH

Grip ref. G08  
Shown in Matt Black Chrome  
and Pearl Chrome



Allart Precision is available in over 30 different finishes & patinas, with the option to mix the finish across the product to create something truly stunning and individual.

ALLART PRECISION®

## DIAMOND MESH MIXED FINISH

Grip ref. G03  
Shown in Antique Brass  
and Polished Brass



ALLART PRECISION®

## LINEAR MIXED FINISH

Grip ref. G04  
Shown in Pearl Nickel  
and Polished Nickel



ALLART PRECISION®

## SPIRAL MIXED FINISH

Grip ref. G05 (all G05R in photograph)  
Paired with STARBURST Rosette  
Shown in Ebony Bronze and Rose Gold



# ALLART PRECISION®

Our collection of fine cut architectural hardware features engineered knurled patterns and precision cuts, suited through each design. With matching or complementary Rosette or Plate options, in a choice of sizes and a palette of over 30 finishes to select and mix between.

All Precision grip designs have a choice of Ringed or Plain end detailing to suit your preference.



Ringed Neck

Plain Neck

Ringed Tip

Plain Tip



**G01 SMOOTH**

Pearl Nickel



**G02 DIAMOND KNURL**

Pearl Chrome



**G03 DIAMOND MESH**

Chestnut Bronze



**G04 LINEAR**

Matt Black Nickel



**G05 SPIRAL**

Paired with Starburst Rosette in Butlers Silver



**G06 ROTOR**

Satin Nickel



**G07 GROOVE**

Dark Matt Bronze

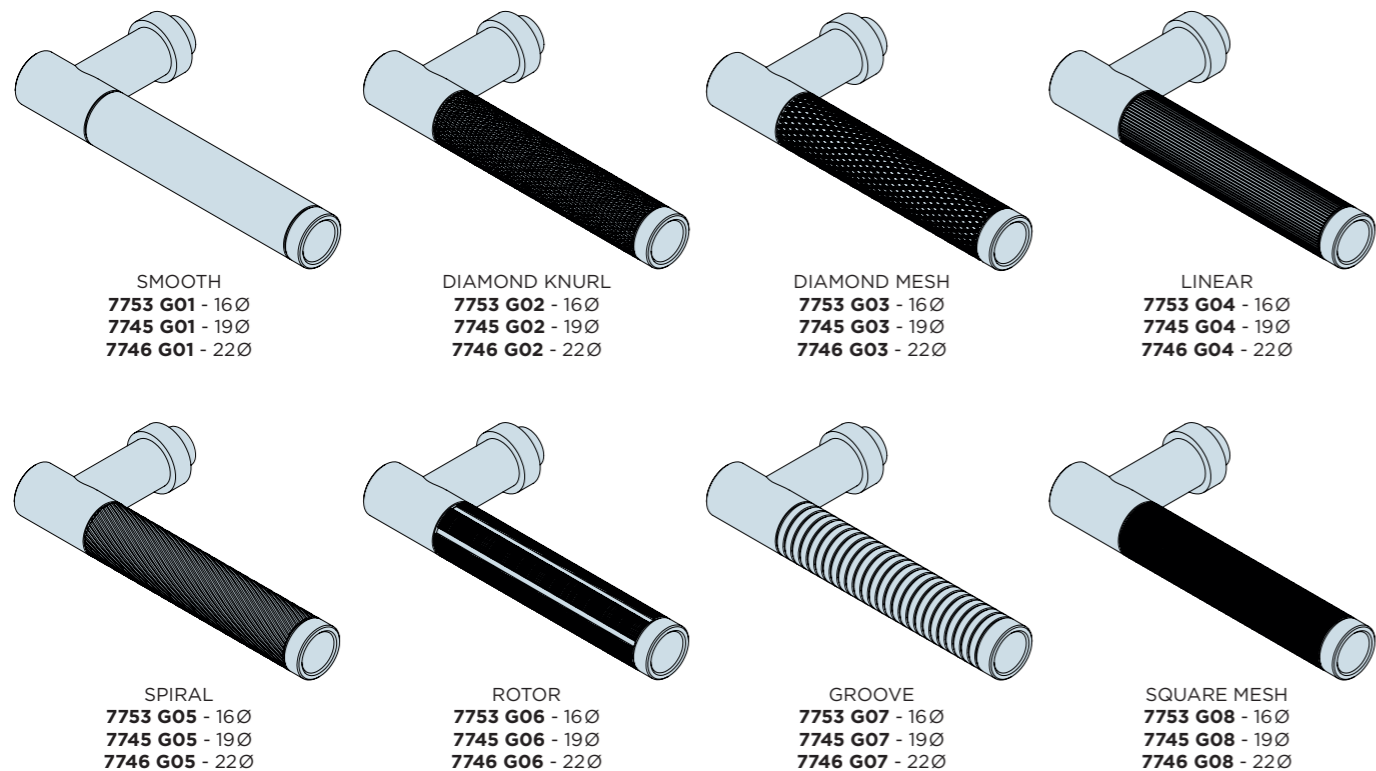


**G08 SQUARE MESH**

Ebony Bronze

## DOOR LEVERS

### PLAIN NECK / PLAIN TIP



SMOOTH  
7753 G01 - 16Ø  
7745 G01 - 19Ø  
7746 G01 - 22Ø

DIAMOND KNURL  
7753 G02 - 16Ø  
7745 G02 - 19Ø  
7746 G02 - 22Ø

DIAMOND MESH  
7753 G03 - 16Ø  
7745 G03 - 19Ø  
7746 G03 - 22Ø

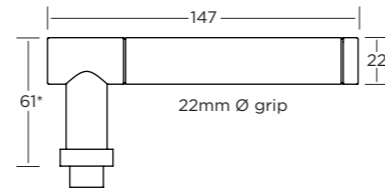
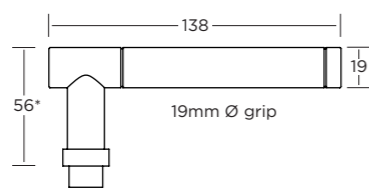
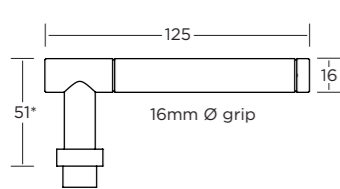
LINEAR  
7753 G04 - 16Ø  
7745 G04 - 19Ø  
7746 G04 - 22Ø

SPIRAL  
7753 G05 - 16Ø  
7745 G05 - 19Ø  
7746 G05 - 22Ø

ROTOR  
7753 G06 - 16Ø  
7745 G06 - 19Ø  
7746 G06 - 22Ø

GROOVE  
7753 G07 - 16Ø  
7745 G07 - 19Ø  
7746 G07 - 22Ø

SQUARE MESH  
7753 G08 - 16Ø  
7745 G08 - 19Ø  
7746 G08 - 22Ø



\* add projection of chosen Rosette or backplate

Supplied with 8mm x 110mm stainless steel lockpoint spindle and M6 grubscrew (64mm max. door thickness); alternative spindle lengths and functions are available, please contact us for details.

To work with Sprung Rosettes, the Lever needs to be machined to fit - add **SPG** to the code (eg. 7753SPG/G01).



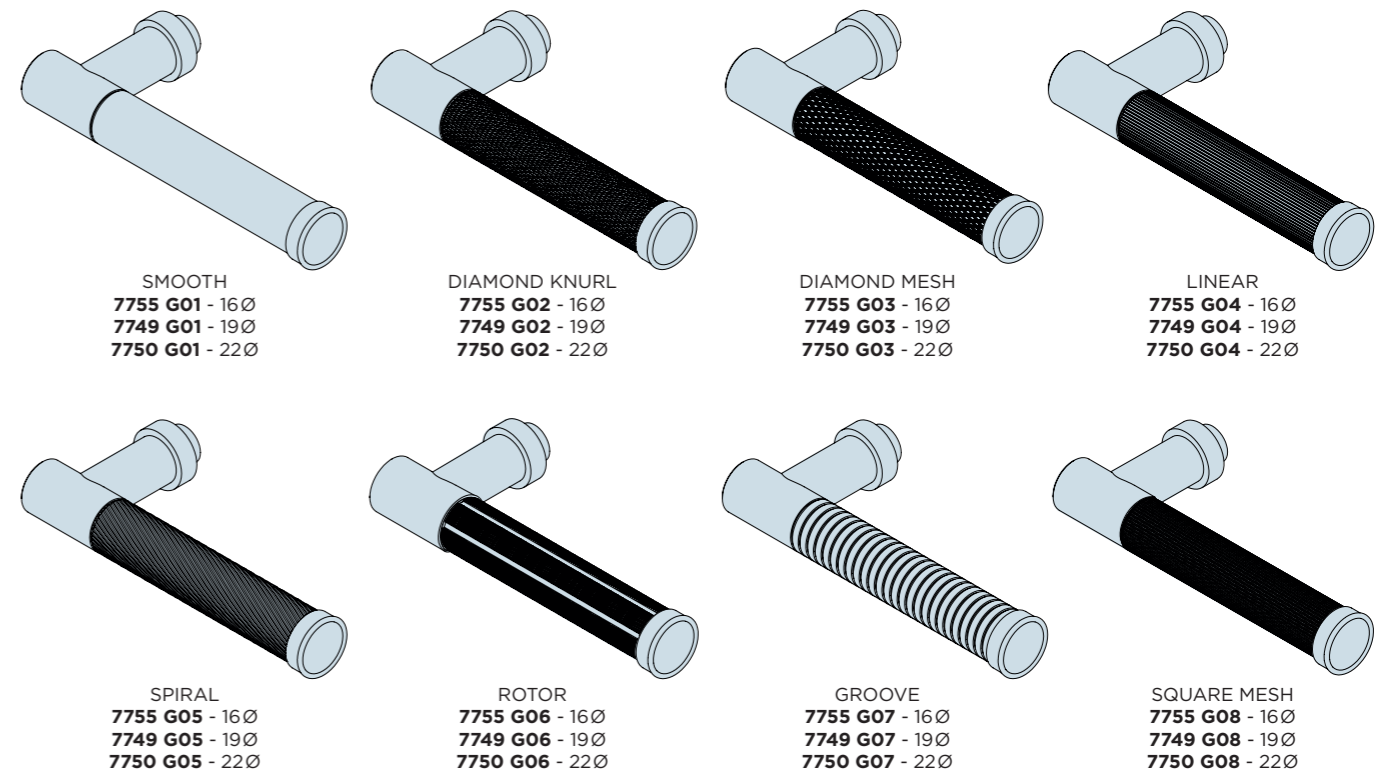
#### HOW TO ORDER

1. Select Lever\* (eg. 7753).
  - \*add SPG if using Sprung Rosette (7753SPG)
  2. add GRIP ref. (7753G01).
  3. add FINISH (7753G01PB).
  4. Single Lever only add HANDING RH or LH (7753G01PB/RH).
- NB. Rosette's are ordered separately.

Mixed finish: select Lever & finish, then add Grip ref & finish (eg. 7753PB/G01SN).

## DOOR LEVERS

### PLAIN NECK / RINGED TIP



SMOOTH  
7755 G01 - 16Ø  
7749 G01 - 19Ø  
7750 G01 - 22Ø

DIAMOND KNURL  
7755 G02 - 16Ø  
7749 G02 - 19Ø  
7750 G02 - 22Ø

DIAMOND MESH  
7755 G03 - 16Ø  
7749 G03 - 19Ø  
7750 G03 - 22Ø

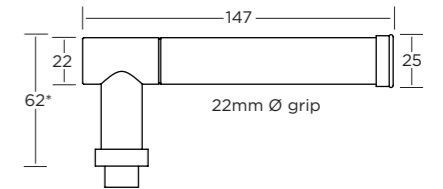
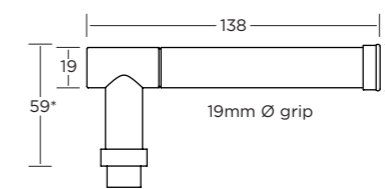
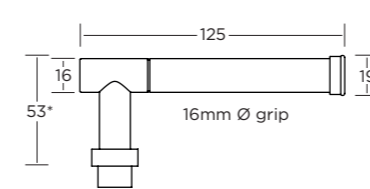
LINEAR  
7755 G04 - 16Ø  
7749 G04 - 19Ø  
7750 G04 - 22Ø

SPIRAL  
7755 G05 - 16Ø  
7749 G05 - 19Ø  
7750 G05 - 22Ø

ROTOR  
7755 G06 - 16Ø  
7749 G06 - 19Ø  
7750 G06 - 22Ø

GROOVE  
7755 G07 - 16Ø  
7749 G07 - 19Ø  
7750 G07 - 22Ø

SQUARE MESH  
7755 G08 - 16Ø  
7749 G08 - 19Ø  
7750 G08 - 22Ø



\* add projection of chosen Rosette or backplate

Supplied with 8mm x 110mm stainless steel lockpoint spindle and M6 grubscrew (64mm max. door thickness); alternative spindle lengths and functions are available, please contact us for details.

To work with Sprung Rosettes, the Lever needs to be machined to fit - add **SPG** to the code (eg. 7755SPG/G01).



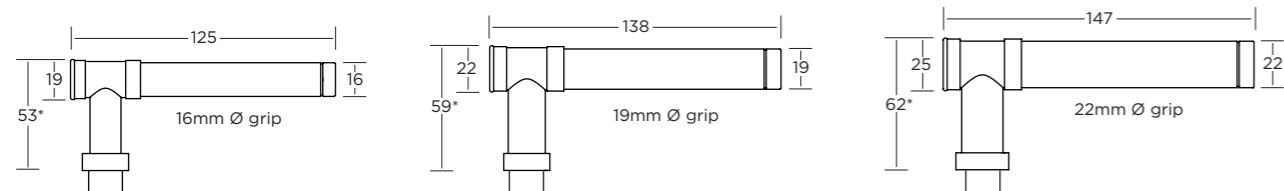
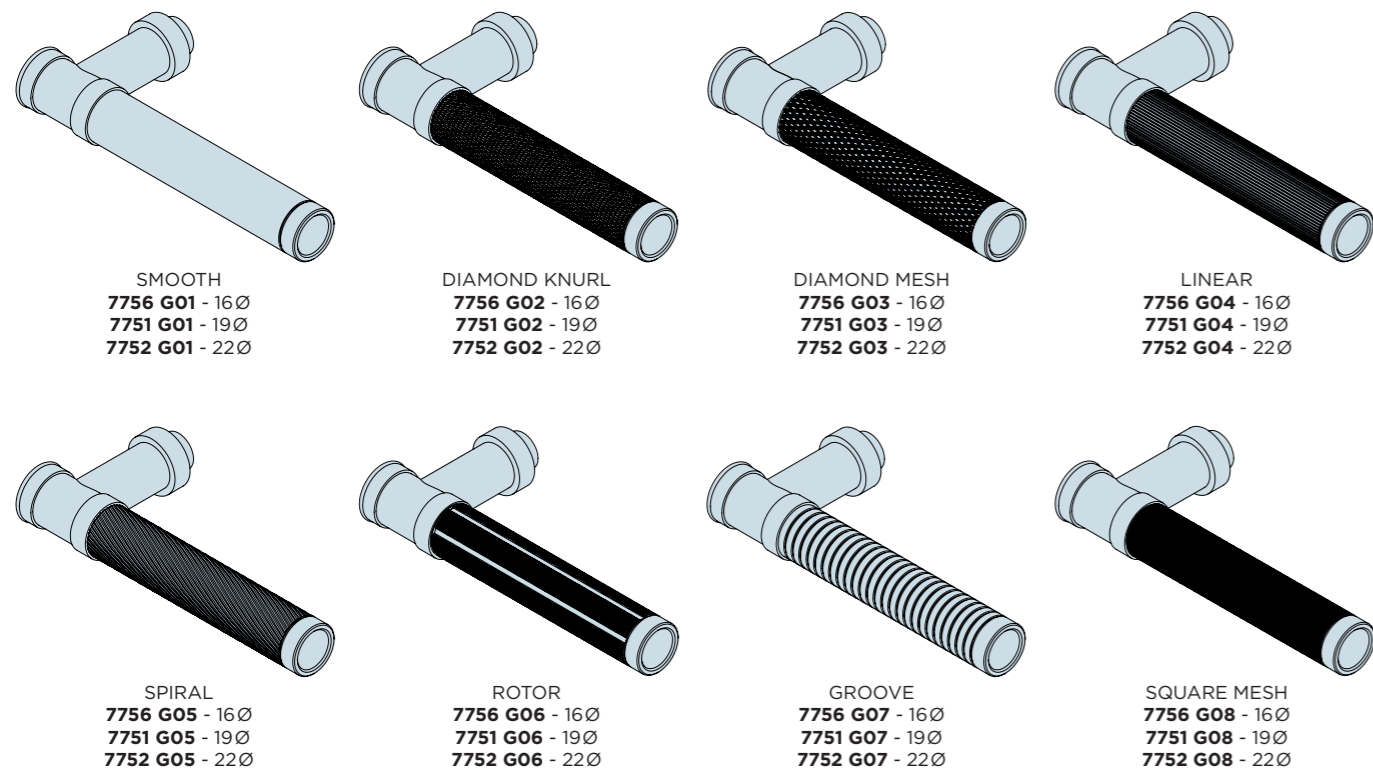
#### HOW TO ORDER

1. Select Lever\* (eg. 7755).
  - \*add SPG if using Sprung Rosette (7755SPG)
  2. add GRIP ref. (7755G01).
  3. add FINISH (7755G01PB).
  4. Single Lever only add HANDING RH or LH (7755G01PB/RH).
- NB. Rosette's are ordered separately.

Mixed finish: select Lever & finish, then add Grip ref & finish (eg. 7755PB/G01SN).

## DOOR LEVERS

### RINGED NECK / PLAIN TIP



\* add projection of chosen Rosette or backplate

Supplied with 8mm x 110mm stainless steel lockpoint spindle and M6 grubscrew (64mm max. door thickness); alternative spindle lengths and functions are available, please contact us for details.

To work with Sprung Rosettes, the Lever needs to be machined to fit - add **SPG** to the code (eg. 7756SPG/G01).



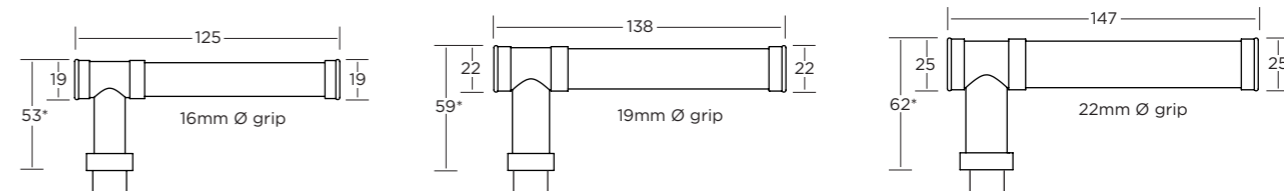
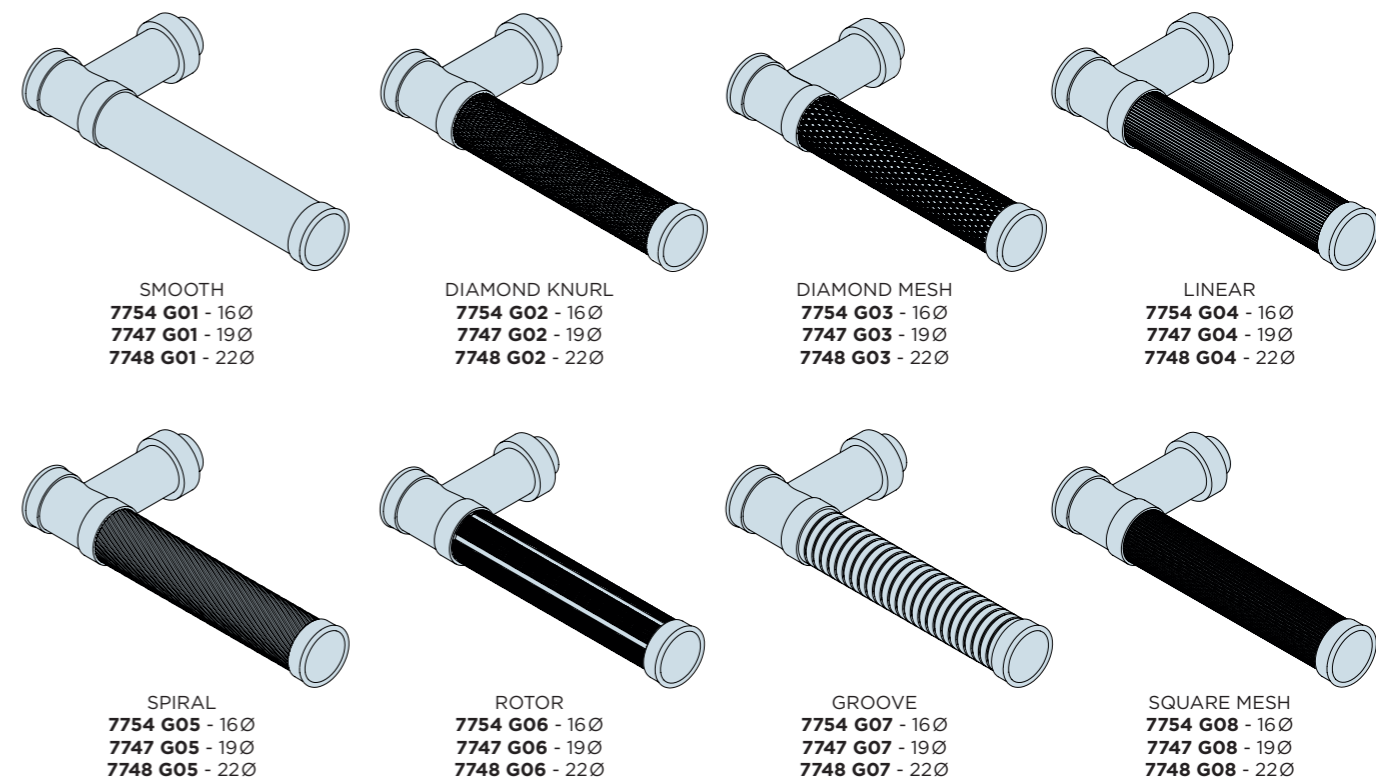
#### HOW TO ORDER

1. Select Lever\* (eg. 7756).
  - \*add SPG if using Sprung Rosette (7756SPG)
  2. add GRIP ref. (7756G01).
  3. add FINISH (7756G01PB).
  4. Single Lever only add HANDING RH or LH (7756G01PB/RH).
- NB. Rosette's are ordered separately.

Mixed finish: choose Lever & finish, then add Grip ref & finish (eg. 7756PB/G01SN).

## DOOR LEVERS

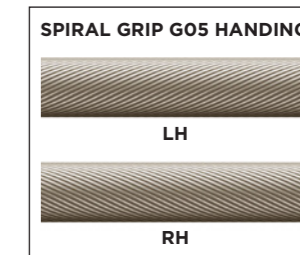
### RINGED NECK / RINGED TIP



\* add projection of chosen Rosette or backplate

Supplied with 8mm x 110mm stainless steel lockpoint spindle and M6 grubscrew (64mm max. door thickness); alternative spindle lengths and functions are available, please contact us for details.

To work with Sprung Rosettes, the Lever needs to be machined to fit - add **SPG** to the code (eg. 7754SPG/G01).



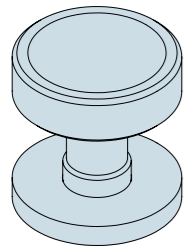
#### HOW TO ORDER

1. Select Lever\* (eg. 7754).
  - \*add SPG if using Sprung Rosette (7754SPG)
  2. add GRIP ref. (7754G01).
  3. add FINISH (7754G01PB).
  4. Single Lever only add HANDING RH or LH (7754G01PB/RH).
- NB. Rosette's are ordered separately.

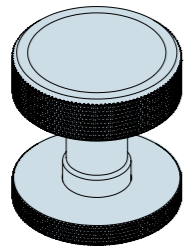
Mixed finish: select Lever & finish, then add Grip ref & finish (eg. 7754PB/G01SN).

## DOOR KNOBS

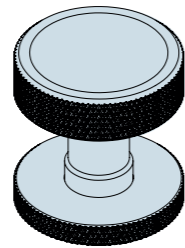
Shown with matching Rosette



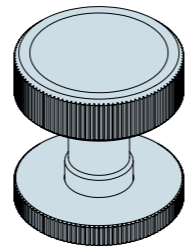
SMOOTH  
**7601 Knob**  
(7843 Rosette)



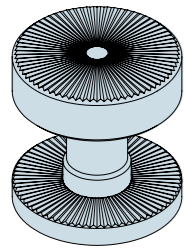
DIAMOND KNURL  
**7602 Knob**  
(7829 Rosette)



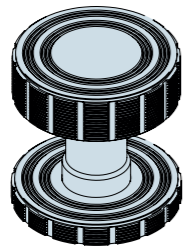
DIAMOND MESH  
**7603 Knob**  
(7836 Rosette)



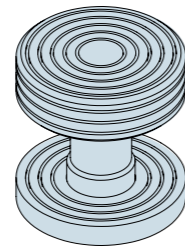
LINEAR  
**7604 Knob**  
(7830 Rosette)



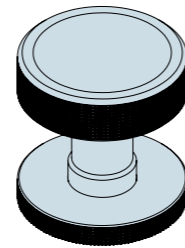
STARBURST  
**7608 Knob**  
(7831 Rosette)



ROTOR  
**7610 Knob**  
(7840 Rosette)



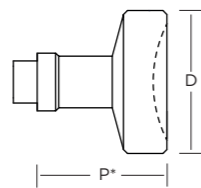
GROOVE  
**7607 Knob**  
(7833 Rosette)



SQUARE MESH  
**7609 Knob**  
(7839 Rosette)

Supplied with 8mm x 110mm stainless steel lockpoint spindle and M6 grubscrew (64mm max. door thickness); alternative spindle lengths and functions are available, please contact us for details.

To work with Sprung Rosettes, the Knob needs to be machined to fit - add **SPG** to the Knob code (eg. 7601SPG).



	A	B	C
Diameter (D)	48	54	64
Projection (P)*	45	49	55

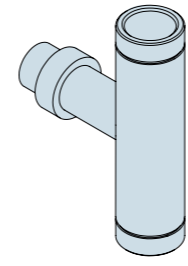
\* add projection of chosen Rosette or backplate

### HOW TO ORDER

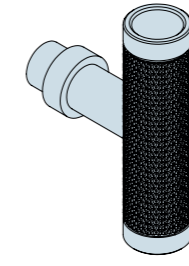
1. Select Knob (eg. **7601**).
  - \*add SPG if using Sprung Rosette (7601SPG)
  2. add FINISH (7601**IPB**).
  3. add Size (7601**PB/B**).
  4. Single Knob only add /H (7601**PB/B/H**).
- NB. Rosette's are ordered separately.

## DOOR T-KNOBS

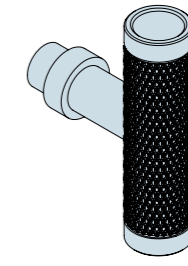
### PLAIN ENDS



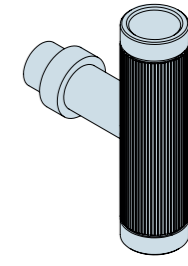
SMOOTH  
**7675 G01** - 19Ø  
**7676 G01** - 22Ø



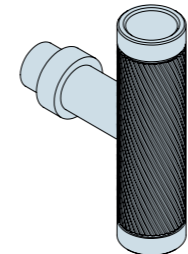
DIAMOND KNURL  
**7675 G02** - 19Ø  
**7676 G02** - 22Ø



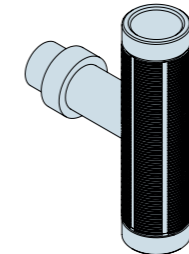
DIAMOND MESH  
**7675 G03** - 19Ø  
**7676 G03** - 22Ø



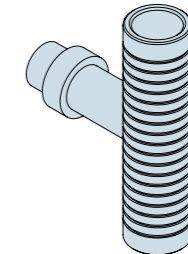
LINEAR  
**7675 G04** - 19Ø  
**7676 G04** - 22Ø



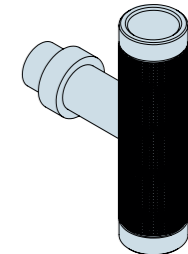
SPIRAL  
**7675 G05\*** - 19Ø  
**7676 G05\*** - 22Ø



ROTOR  
**7675 G06** - 19Ø  
**7676 G06** - 22Ø



GROOVE  
**7675 G07** - 19Ø  
**7676 G07** - 22Ø



SQUARE MESH  
**7675 G08** - 19Ø  
**7676 G08** - 22Ø

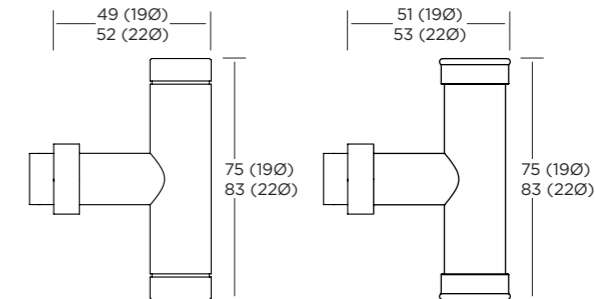
\*G05L or R (LH or RH) for single T-Knob

Supplied with 8mm x 110mm stainless steel lockpoint spindle and M6 grubscrew (64mm max. door thickness); alternative spindle lengths and functions are available, please contact us for details.

### HOW TO ORDER

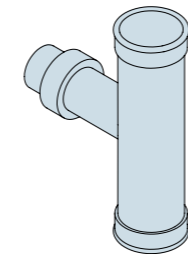
1. Select T-Knob (eg. **7675**).
  - \*add SPG if using Sprung Rosette (7675SPG).
  2. add GRIP ref. (7675**G01**)
  3. add FINISH (7675G01**IPB**)
  4. Single T-Knob only add /H (7675G01**PB/H**).
- NB. Rosette's are ordered separately.

Mixed finish: select T-Knob & finish, then add Grip ref & finish (eg. 7675**PB/G01SN**).

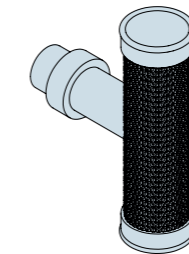


To work with Sprung Rosettes, the T-Knob needs to be machined to fit - add **SPG** to the Knob code (eg. 7675SPG).

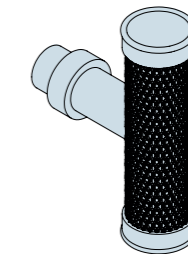
### RINGED ENDS



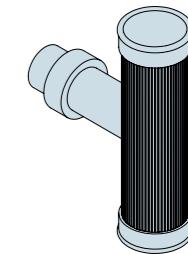
SMOOTH  
**7677 G01** - 19Ø  
**7678 G01** - 22Ø



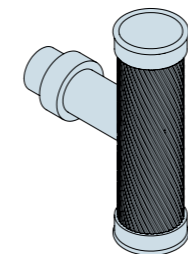
DIAMOND KNURL  
**7677 G02** - 19Ø  
**7678 G02** - 22Ø



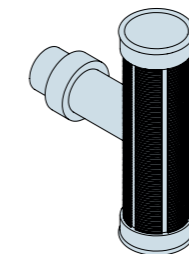
DIAMOND MESH  
**7677 G03** - 19Ø  
**7678 G03** - 22Ø



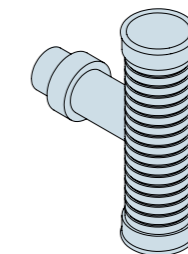
LINEAR  
**7677 G04** - 19Ø  
**7678 G04** - 22Ø



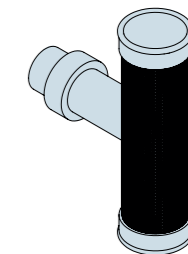
SPIRAL  
**7677 G05\*** - 19Ø  
**7678 G05\*** - 22Ø



ROTOR  
**7677 G06** - 19Ø  
**7678 G06** - 22Ø



GROOVE  
**7677 G07** - 19Ø  
**7678 G07** - 22Ø

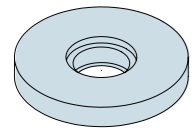


SQUARE MESH  
**7677 G08** - 19Ø  
**7678 G08** - 22Ø

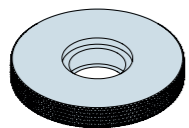
\*G05L or R (LH or RH) for single T-Knob



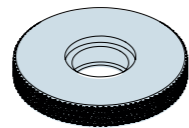
## DOOR ROSETTES



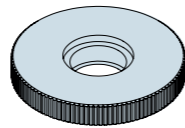
SMOOTH  
7843 - 7mm thick  
7843T - 5mm thick



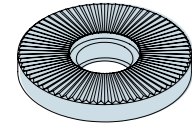
DIAMOND KNURL  
7829 - 7mm thick  
7829T - 5mm thick



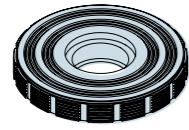
DIAMOND MESH  
7836 - 7mm thick  
7836T - 5mm thick



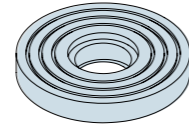
LINEAR  
7830 - 7mm thick  
7830T - 5mm thick



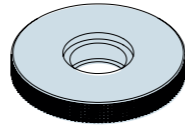
STARBURST  
7831 - 7mm thick  
7831T - 5mm thick



ROTOR  
7840 - 7mm thick  
7840T - 5mm thick



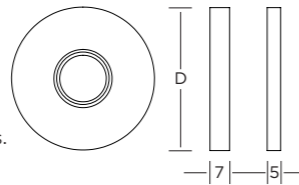
GROOVE  
7833 - 7mm thick  
7833T - 5mm thick



SQUARE MESH  
7839 - 7mm thick  
7839T - 5mm thick



Supplied with subroses, no.4 x 13mm wood screws, alignment collars and installation instructions.



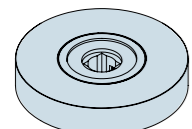
	A	B	C	D
Diameter (D)	44	54	64	76

Alternative fixing & fitting options, please contact us for details.

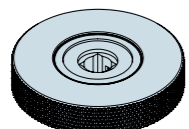
### HOW TO ORDER

1. select ROSETTE (eg. 7843). 2. add FINISH (7843PB). 3. add SIZE (7843PB/B). For single Rosette add/H (7843PB/B/H).  
For FIX DEAD: pairs add FDS, or single Rosette FD (7843PB/B/FDS).  
For PRE-BORE ADAPTOR (sizes C & D only) add PRE (7843PB/C/PRE).

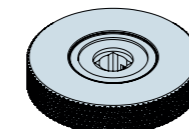
## DOOR ROSETTES - SPRUNG



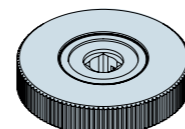
SMOOTH  
7843SPG - 10mm thick  
7843SPGT - 5mm thick



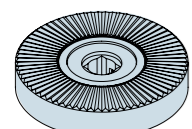
DIAMOND KNURL  
7829SPG - 10mm thick  
7829SPGT - 5mm thick



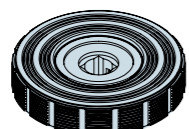
DIAMOND MESH  
7836SPG - 10mm thick  
7836SPGT - 5mm thick



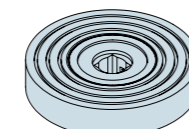
LINEAR  
7830SPG - 10mm thick  
7830SPGT - 5mm thick



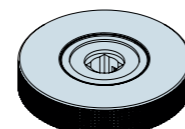
STARBURST  
7831SPG - 10mm thick  
7831SPGT - 5mm thick



ROTOR  
7840SPG - 10mm thick  
7840SPGT - 5mm thick



GROOVE  
7833SPG - 10mm thick  
7833SPGT - 5mm thick

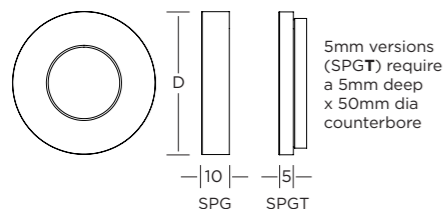


SQUARE MESH  
7839SPG - 10mm thick  
7839SPGT - 5mm thick

Supplied with no.6 x 19mm wood screws and M5 machine screws to suit 44mm or 57mm thick doors, M5 machine screws for thicker doors available on request. Alternative fitting options (eg. **vertical orientation** or **pre-bore adaption**) can be provided - please contact us for further information.

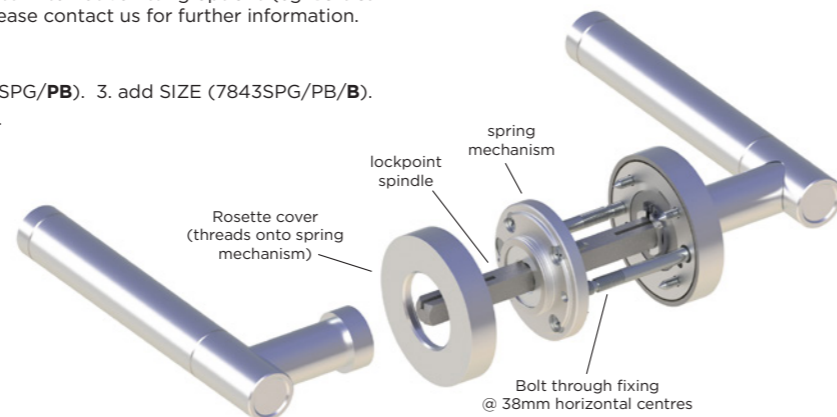
### HOW TO ORDER

1. select ROSETTE (eg. 7843SPG). 2. add FINISH (7843SPG/PB). 3. add SIZE (7843SPG/PB/B).  
For single Rosette add HANDING (7843SPG/PB/B/RH).



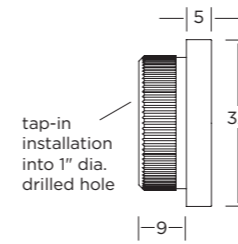
5mm versions (SPGT) require a 5mm deep x 50mm dia counterbore

	B	C
Diameter (D)	54	64

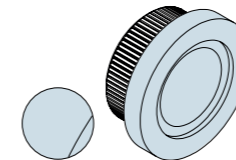


## DOOR TRIM COLLARS

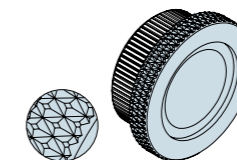
Our discrete Trim Collars are only 32mm in diameter and provide an alternative to conventional Rosettes for a simple/minimalist look. Designed to work in conjunction with Precision Door Levers, T-Knobs & Knobs.



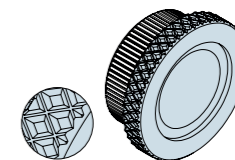
No fixings required, the Trim Collar simply taps into a 1" diameter hole.



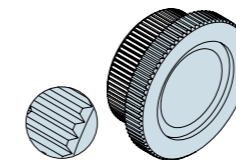
SMOOTH  
7851J



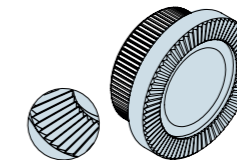
DIAMOND KNURL  
7851G02



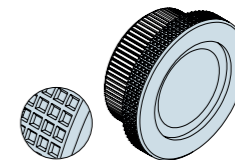
DIAMOND MESH  
7851G03



LINEAR  
7851G04



STARBURST  
7851S



SQUARE MESH  
7851G08

### HOW TO ORDER

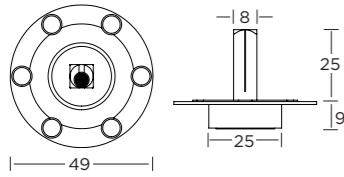
1. select TRIM COLLAR (eg. 7851G02).  
2. add FINISH (7851G02/PB).  
For single Collar add/H (7851G02/PB/H).  
FIX DEAD and FIXED DEAD SET can be achieved using the 7802 Fix-Dead Dummy Insert.  
NB. Half set fixed dead also requires a 7818 Single Side Spindle. Both ordered separately.



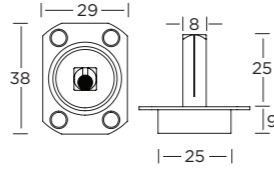
7802 Fix-Dead Dummy Insert

## DOOR KNOB & LEVER OPTIONS

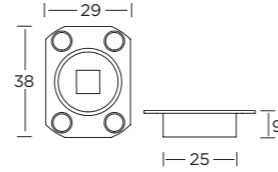
**7811 Fix Dead Dummy Mount** (solid doors)  
Heavy duty version for doors fitted with a door control and/or seals. For single lever/knob, 2 required for pairs of levers/knobs.  
**Not suitable for Ø44mm Roses.**  
Supplied with no. 6 x 32mm wood screws.



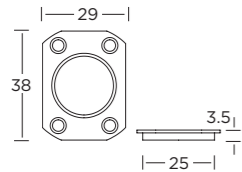
**7813 Fix Dead Dummy Mount** (solid doors)  
For single lever/knob, 2 required for pairs of levers/knobs.  
Supplied with no. 6 x 19mm wood screws.



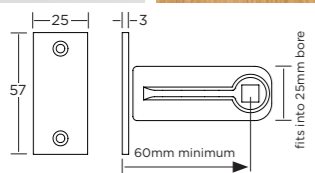
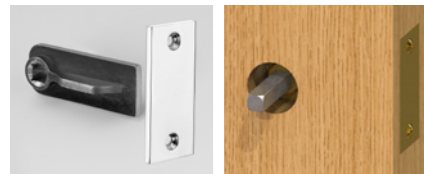
**7814 Fix Dead Dummy Mount Set** (solid doors)  
Alternative mounting for pairs of levers/knobs using existing spindle.  
Supplied with no. 6 x 19mm wood screws.



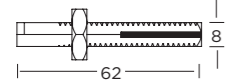
**7810 Subrose for solid doors**  
Included as standard with all concealed fix rosettes & backplates).  
Supplied with no. 4 x 13mm wood screws.



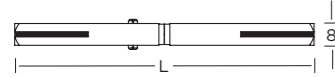
**7802 Fix-Dead Dummy Insert**  
For installation into either a solid or pre-bored door where no latching is required. Face Plate and cut head screws are finish matched.



**7818 Single Side Operating Spindle**  
For use on applications where operation of lever/knob is required on one door face only.  
Suitable for doors 35-60mm thick.

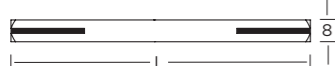


**7816 Lockpoint Swivel Spindle**  
For use with split follower locks.



	A	B	C
L (length)	96	110	125
Door Thickness	25-51	40-64	50-80

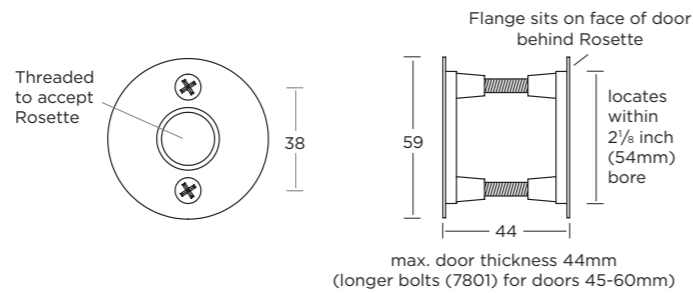
**7815 Lockpoint Spindle**



	A	B	C	D	E
L (length)	75	96	110	125	155
Door Thickness	5-30	25-51	35-64	50-80	80-110

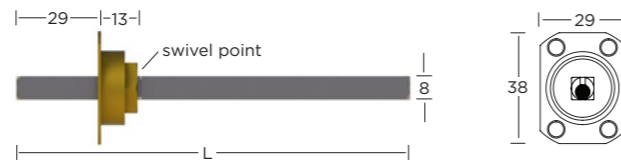
**7800 Pre-Bored Door Adaptor** for use with 2 1/8 inch bore - ANSI 161 preparation.  
Supplied with alignment collars and M5 x 35mm machine screws to suit doors between 32mm and 44mm thick.

**7801 Optional Long Screw Pack** pack of 2pcs - M5 x 50mm machine screws for adapting 7800 to cater for doors between 45mm and 60mm thick.

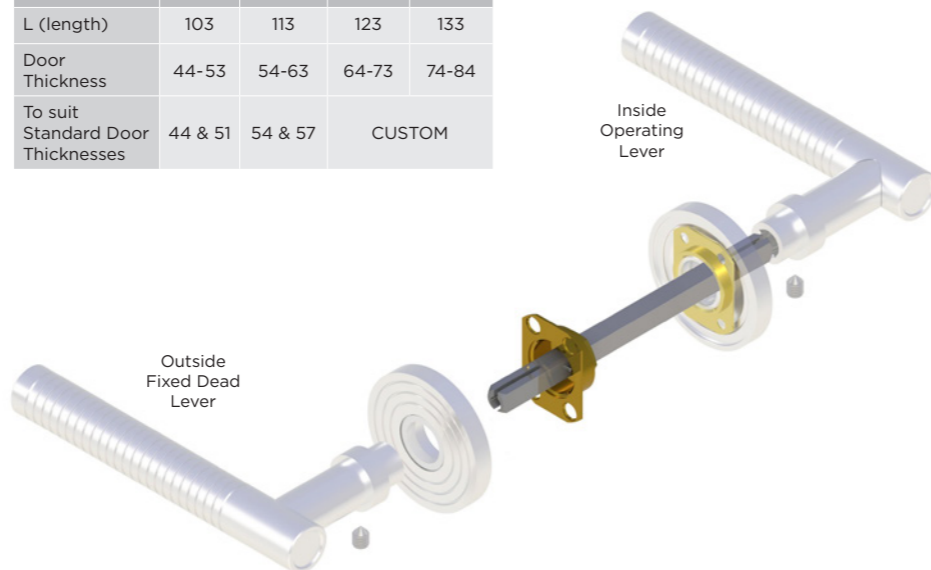


**7806 Access Control (AC) Spindle**

Designed to provide a strong and secure fixing for the outside fixed dead (dummy) Lever/Knob when used in conjunction with a Night Latch/Electric Strike/Key Fob. Typical applications are hotel bedroom doors and high-end residential apartment entrance doors.  
Supplied with no. 6 x 19mm wood screws



	A	B	C	D
L (length)	103	113	123	133
Door Thickness	44-53	54-63	64-73	74-84
To suit Standard Door Thicknesses	44 & 51	54 & 57	CUSTOM	

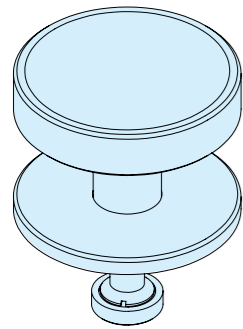


## BACKPLATES & FUNCTIONS

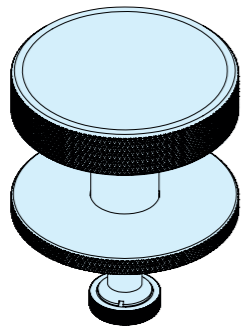


In addition to Rosettes, Door Levers, Knobs and T-Knobs can also be paired with our complementary Allart Select backplates, offering many different operating and locking functions.

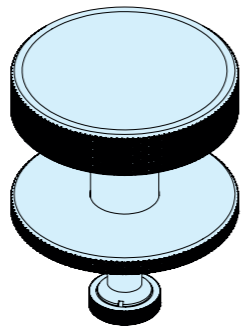
## CENTRE DOOR KNOBS



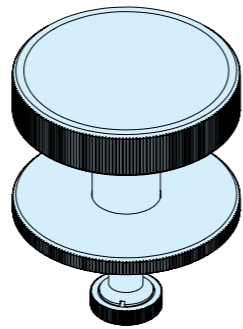
SMOOTH  
2571  
CDR01 Rosette only



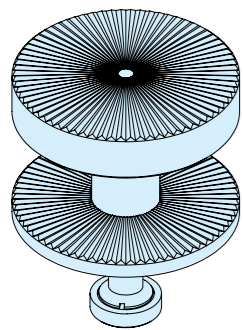
DIAMOND KNURL  
2572  
CDR02 Rosette only



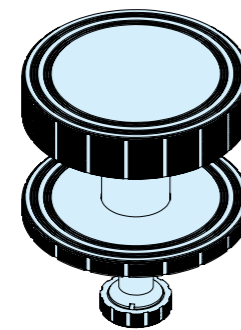
DIAMOND MESH  
2573  
CDR03 Rosette only



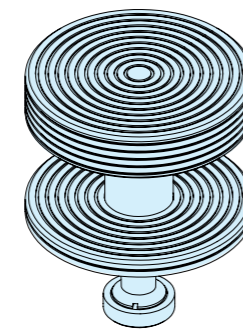
LINEAR  
2574  
CDR04 Rosette only



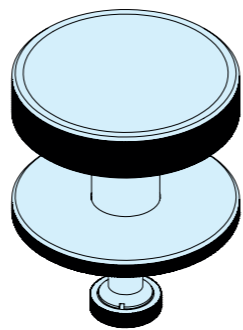
STARBURST  
2579  
CDR05 Rosette only



ROTOR  
2576  
CDR06 Rosette only



GROOVE  
2577  
CDR07 Rosette only



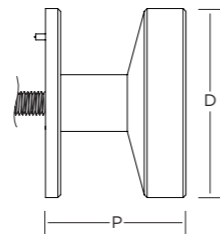
SQUARE MESH  
2578  
CDR08 Rosette only

Supplied with anti-rotation pin, blind nut with design-matched cover cap, and M12 x 50mm allthread to suit doors up to 57mm thick (longer allthread available on request). Pairs of Knobs are supplied with a back-to-back fixing system.

### HOW TO ORDER

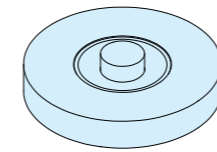
1. Select Knob (eg. 2571).
2. add FINISH (2571PB).
3. add SIZE (2571PB/B).
4. To order Secret Face Fixed version add SFF (2571PB/B/SFF).
5. To order a pair of Knobs with BACK-TO-BACK fixings add BTB (2571PB/B/BTB).

Mixed finish: select Knob, finish, size, then Rosette & finish (2571PB/B/CDR01AB).

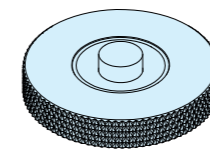


	A	B
Diameter (D)	81	100
Projection (P)	64	74

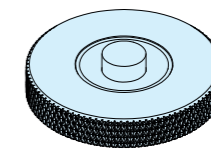
## DOOR BELL PUSHES



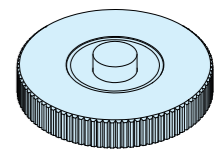
SMOOTH  
7843BP



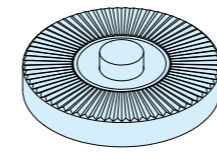
DIAMOND KNURL  
7829BP



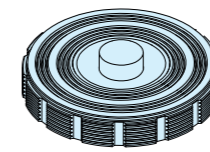
DIAMOND MESH  
7836BP



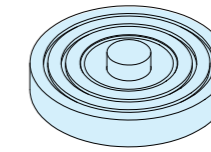
LINEAR  
7830BP



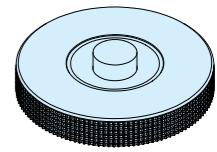
STARBURST  
7831BP



ROTOR  
7840BP



GROOVE  
7833BP

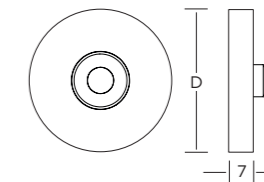


SQUARE MESH  
7839BP

Supplied with subrose and no.4 x 13mm wood screws.

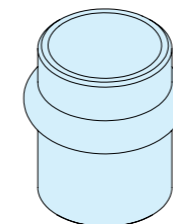
### HOW TO ORDER

1. Select PUSH (eg. 7843BP).
2. add FINISH (7843BP/SC)
3. add SIZE (7843BP/SC/A).

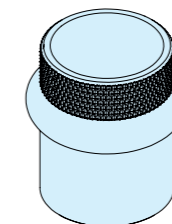


	A	B	C	D
Diameter (D)	44	54	64	76

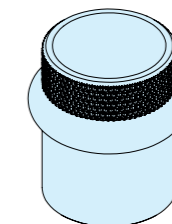
## DOOR STOPS



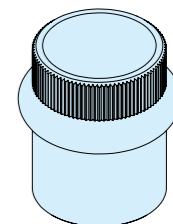
SMOOTH  
2131



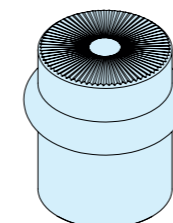
DIAMOND KNURL  
2132



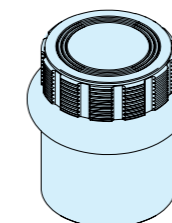
DIAMOND MESH  
2133



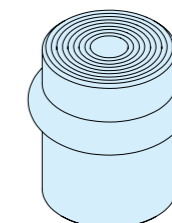
LINEAR  
2134



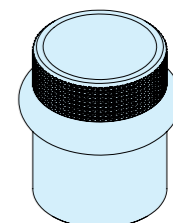
STARBURST  
2139



ROTOR  
2136



GROOVE  
2138

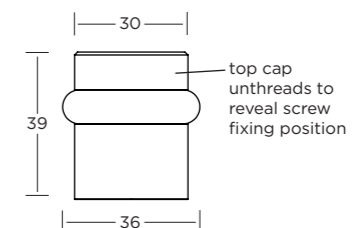


SQUARE MESH  
2137

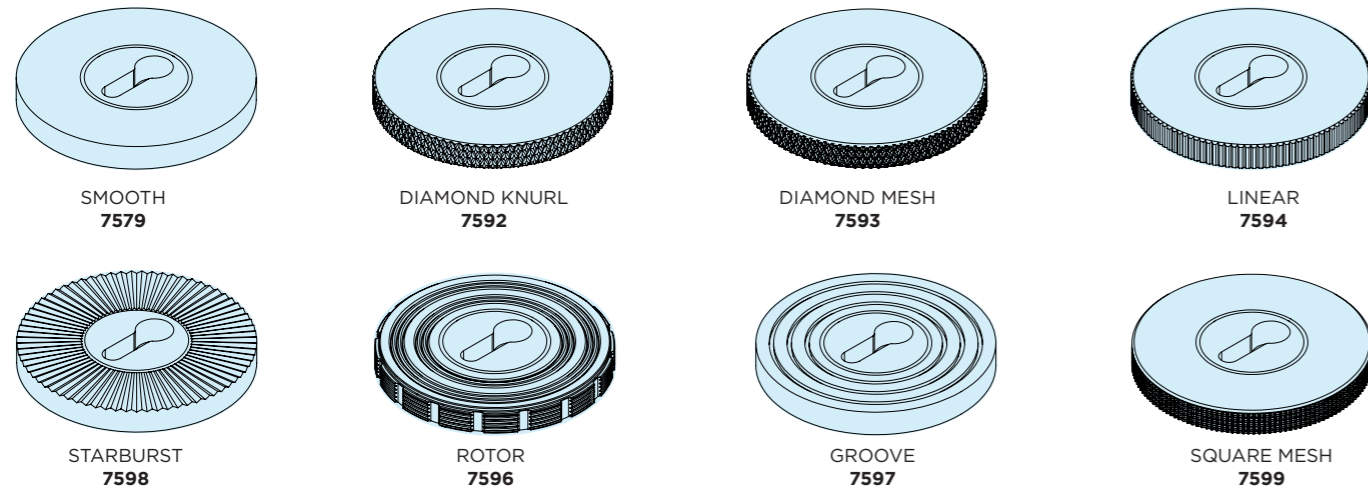
Supplied with no.12 x 38mm wood screw and features a black rubber as standard, white also available upon request.

### HOW TO ORDER

1. Select DOOR STOP (eg. 2131)
2. add FINISH (2131PB).



## ESCUTCHEONS 44-76mm

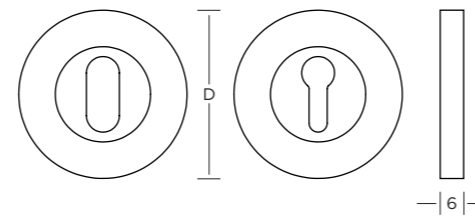
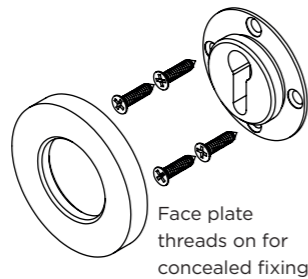


**HOW TO ORDER**

1. Select ESCUTCHEON (eg. **7579**).
  2. add SIZE (**7579B**).
  3. add FINISH (**7579B/PB**).
- NB. add 'SLOT' suffix to obtain slot in place of key hole (**7579B/PB/SLOT**).

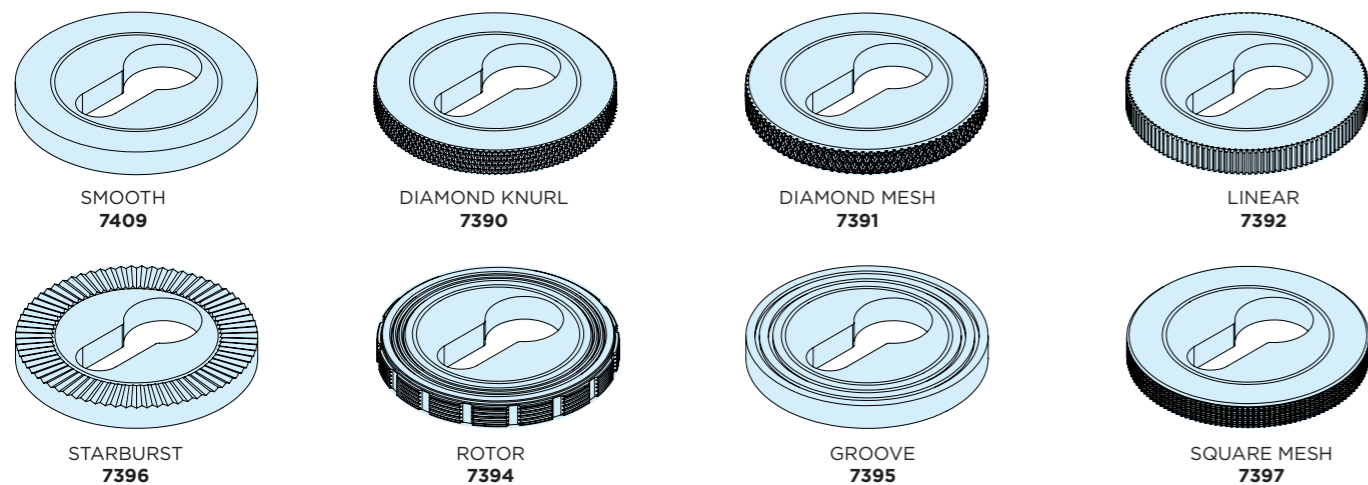
Supplied with no.4 x 13mm wood screws.

Available in either Slot or traditional Keyhole.



	A	B	C	D
Diameter (D)	44	54	64	76

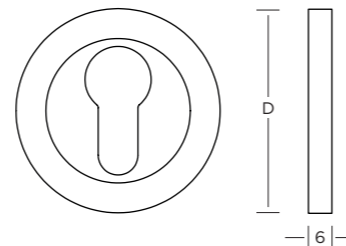
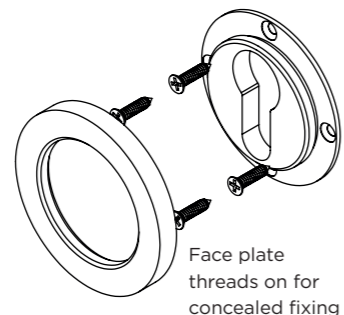
## ESCUTCHEONS 54-76mm



**HOW TO ORDER**

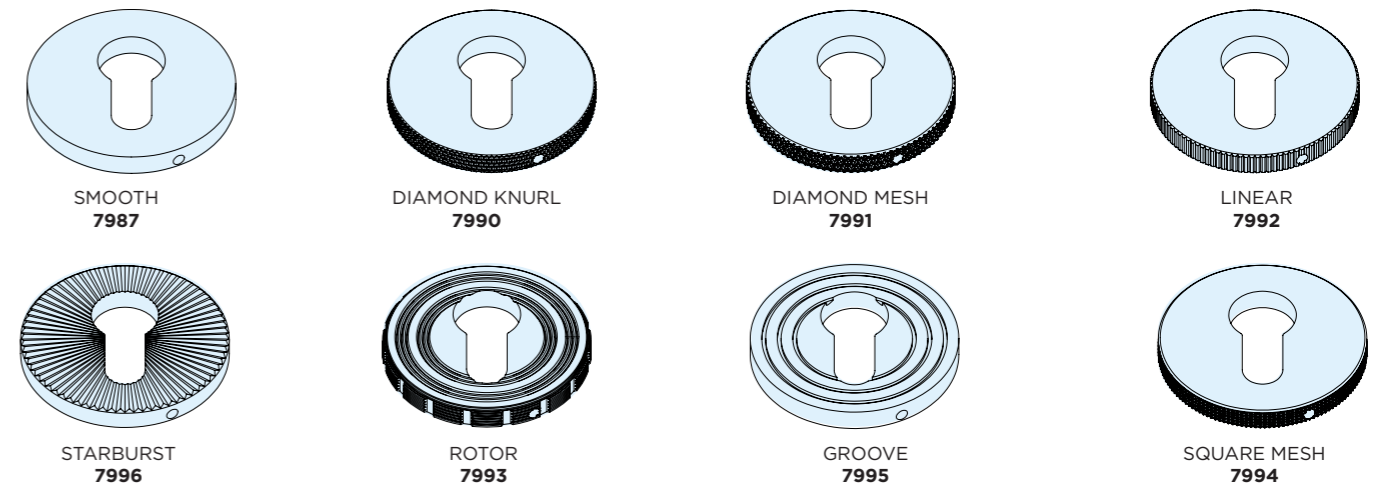
1. Select ESCUTCHEON (eg. **7409**).
  2. add SIZE (**7409B**).
  3. add FINISH (**7409B/PB**).
- NB. add 'BLANK' suffix to obtain solid centre section, used to conceal incorrectly machine cylinder hole (**7409B/PB/BLANK**).

Supplied with no.4 x 13mm wood screws.



	B	C	D
Diameter (D)	54	64	76

## ESCUTCHEONS 44-64mm

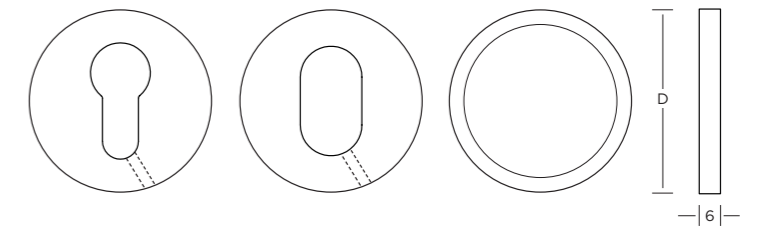


Supplied with grub screw for fixing to cylinder. The application of a small amount of contact adhesive to the rear of the Escutcheon is recommended.

**HOW TO ORDER**

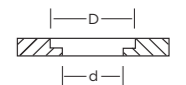
**Escutcheon:**

1. Select ESCUTCHEON (eg. **7987**).
2. add SIZE (**7987B**).
3. add PROFILE (**7987B/O**) or Cylinder Type (**7987B/US**).
4. add FINISH (**7987B/O/PB**).



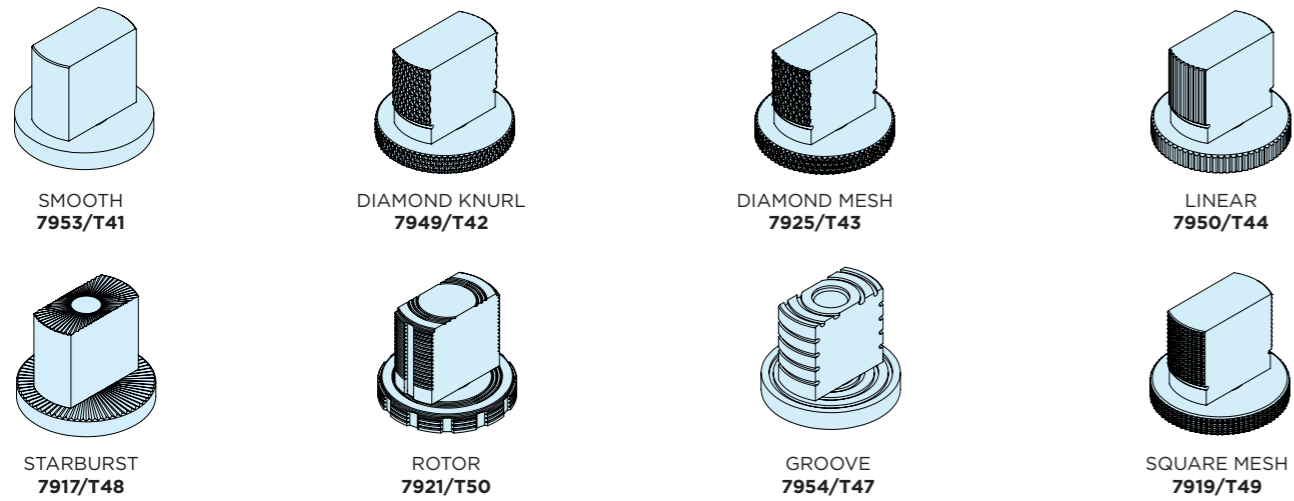
Available in either Euro (E) or Oval (O)\* profile or as Cylinder Collar (UK or US). \*cutout for standard 32 x 18mm oval cylinder (larger cutouts available upon request).

	A	B	C
Diameter (D)	44	54	64

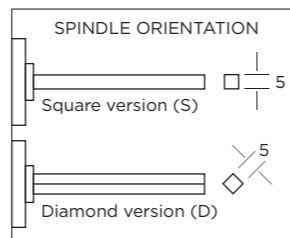
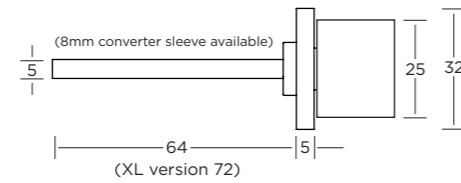


Code	Cylinder type	D	d
UK	UK standard	33	30
US	US standard	35	32

## THUMB TURNS - 32mm



Supplied with subrose, alignment insert, no.4 x 13mm wood screws, release key and installation instructions. Turns are supplied fitted with a 5mm square spindle in either square (S) or diamond (D) orientation which must be specified.



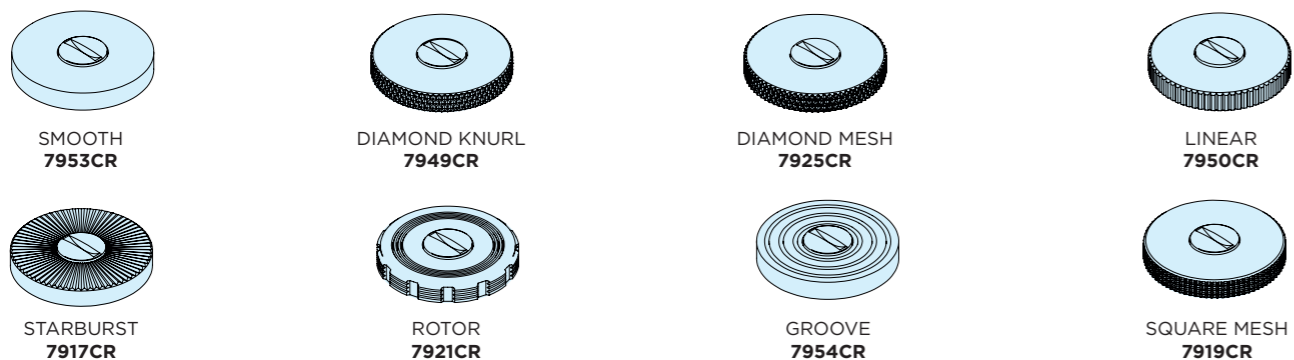
### HOW TO ORDER

1. Select TURN & ROSETTE (eg. **7953**).
2. add TURN CODE & SPINDLE ORIENTATION (7953/**T41S**).
3. add FINISH (7953/T41S/**PB**).

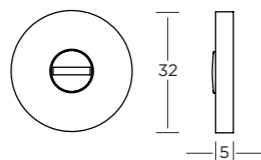
Mixed finish: select Rosette & finish, Turn & Spindle orientation & finish (7953AB/T41S/PB).

NB. If your Turn is to be used along with a matching Coin Release below AND the door thickness is between 66mm and 76mm thick you will need to add XL to your code (eg. 7953/T41S/PB/**XL**).

## COIN RELEASES - 32mm



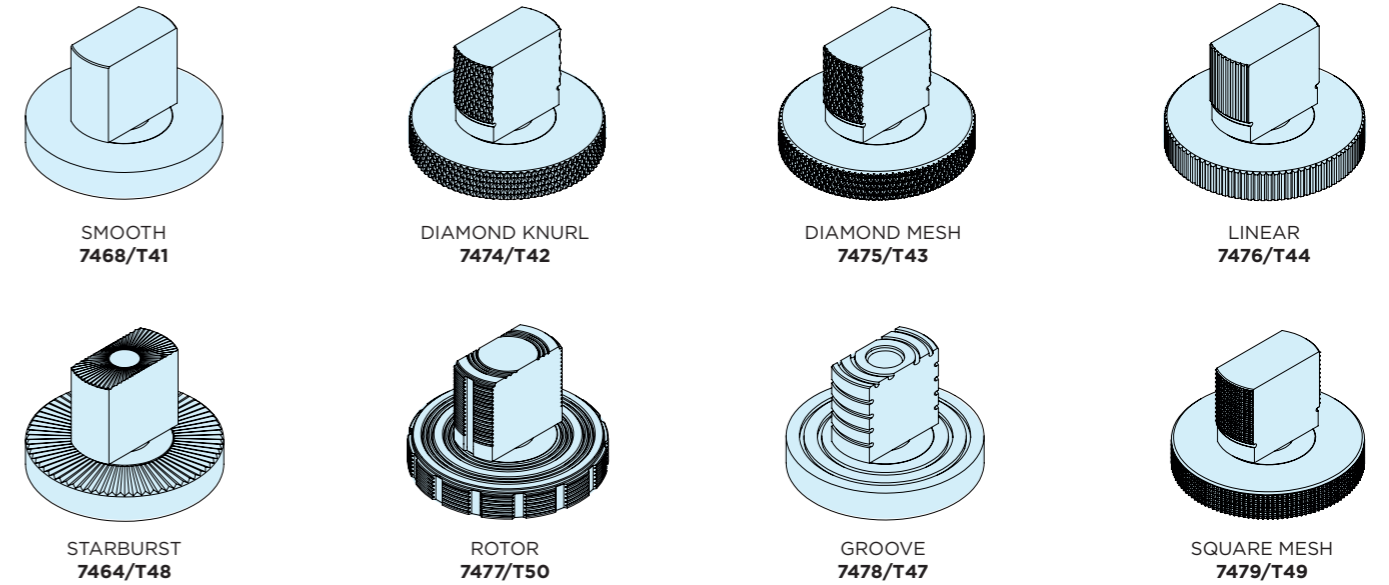
Supplied with subrose, alignment insert, no.4 x 13mm wood screws and installation instructions.



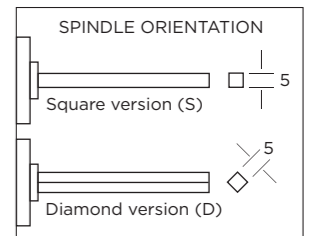
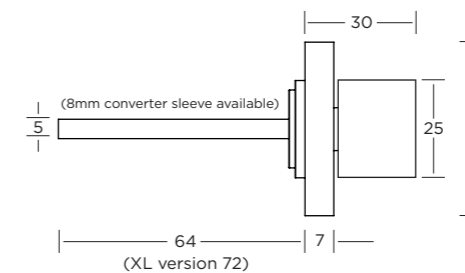
### HOW TO ORDER

1. Select RELEASE (eg. **7953CR**).
2. add FINISH (7953CR/**PB**).

## THUMB TURNS - 44-76mm



Supplied with subrose, alignment insert, no.4 x 13mm wood screws, release key and installation instructions. Turns are supplied fitted with a 5mm square spindle in either square (S) or diamond (D) orientation which must be specified.



	A	B	C	D
Diameter (D)	44	54	64	76

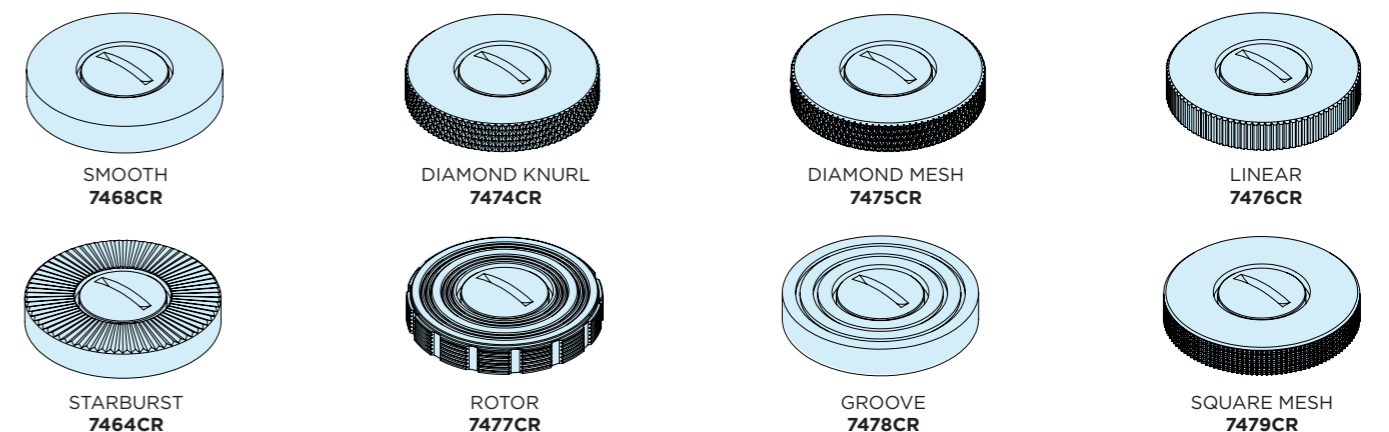
### HOW TO ORDER

1. Select ROSETTE DESIGN (eg. **7468**).
2. add SIZE (**7468B**).
3. add TURN CODE & SPINDLE ORIENTATION (7468B/**T41S**).
4. add FINISH (7468B/T41S/**PB**).

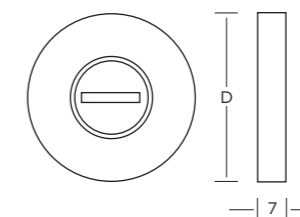
Mixed finish: select Rosette & finish, size, Turn & Spindle orientation & finish (7468AB/B/T41S/PB).

NB. If your Turn is to be used along with a matching Coin Release below AND the door thickness is between 66mm and 76mm thick you will need to add XL to your code (eg. 7468B/T41S/PB/**XL**).

## COIN RELEASES - 44-76mm



Supplied with subrose, alignment insert, no.4 x 13mm wood screws and installation instructions.



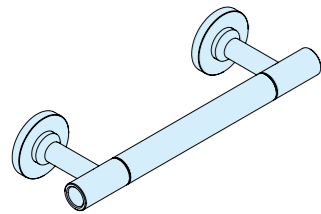
	A	B	C	D
Diameter (D)	44	54	64	76

### HOW TO ORDER

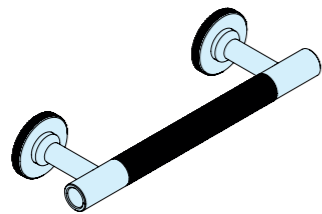
1. Select ROSETTE DESIGN (eg. **7468**).
2. add SIZE (**7468B**).
3. add CR (7468B/**CR**).
4. add FINISH (7468B/CR/**PB**).

# DOOR PULLS

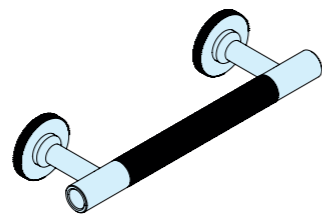
## PLAIN ENDS



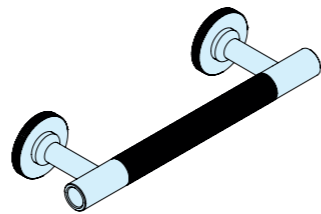
**SMOOTH**  
**1401 G01** -19Ø (**1400** no Rosette)  
**1405 G01** -22Ø (**1404** no Rosette)  
**1409 G01** -25Ø (**1408** no Rosette)  
**DPR01** Smooth Rosette only



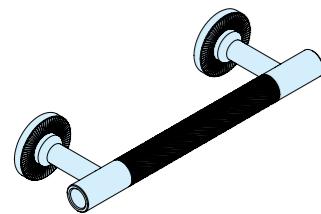
**DIAMOND KNURL**  
**1401 G02** -19Ø (**1400** no Rosette)  
**1405 G02** -22Ø (**1404** no Rosette)  
**1409 G02** -25Ø (**1408** no Rosette)  
**DPR02** Diamond Knurl Rosette only



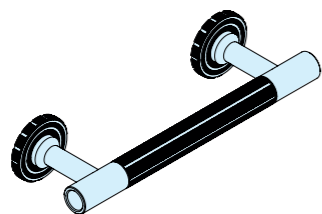
**DIAMOND MESH**  
**1401 G03** -19Ø (**1400** no Rosette)  
**1405 G03** -22Ø (**1404** no Rosette)  
**1409 G03** -25Ø (**1408** no Rosette)  
**DPR03** Diamond Mesh Rosette only



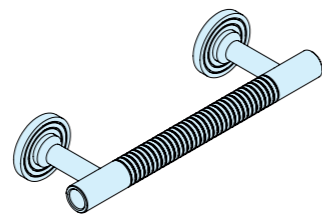
**LINEAR**  
**1401 G04** -19Ø (**1400** no Rosette)  
**1405 G04** -22Ø (**1404** no Rosette)  
**1409 G04** -25Ø (**1408** no Rosette)  
**DPR04** Linear Rosette only



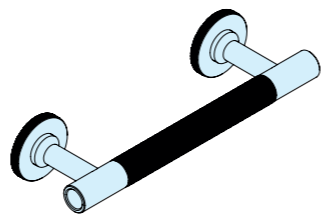
**SPIRAL**  
**1401 G05\*** -19Ø (**1400** no Rosette)  
**1405 G05\*** -22Ø (**1404** no Rosette)  
**1409 G05\*** -25Ø (**1408** no Rosette)  
 \*G05L or R (LH or RH)  
**DPR05** Starburst Rosette only



**ROTOR**  
**1401 G06** -19Ø (**1400** no Rosette)  
**1405 G06** -22Ø (**1404** no Rosette)  
**1409 G06** -25Ø (**1408** no Rosette)  
**DPR06** Rotor Rosette only



**GROOVE**  
**1401 G07** -19Ø (**1400** no Rosette)  
**1405 G07** -22Ø (**1404** no Rosette)  
**1409 G07** -25Ø (**1408** no Rosette)  
**DPR07** Groove Rosette only



**SQUARE MESH**  
**1401 G08** -19Ø (**1400** no Rosette)  
**1405 G08** -22Ø (**1404** no Rosette)  
**1409 G08** -25Ø (**1408** no Rosette)  
**DPR08** Square Mesh Rosette only

### HOW TO ORDER

1. Select Door Pull (eg. **1401**).
2. add SIZE (1401C).
3. add GRIP ref. (1401C/**G01**).
4. add FINISH\* (1401C/**G01PB**).

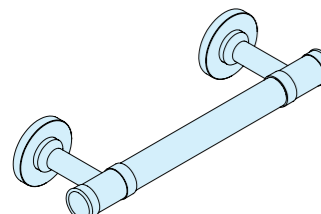
\*Door Pulls are not available in solid bronze finishes.

Mixed finish: For Pull only (no Rosette) select Pull code, size & finish, then add grip ref & finish (eg. 1400C/PB/G01SN).

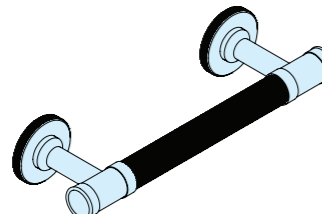
For Pull with Rosette select Pull code, size & finish, then add grip ref & finish, then Rosette type & finish (eg. 1401C/PB/G01SN/DPR05SC).



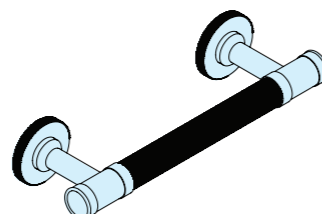
## RINGED ENDS



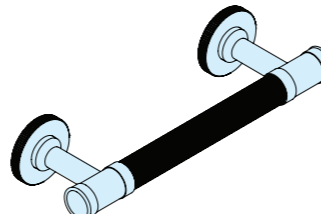
**SMOOTH**  
**1403 G01** -19Ø (**1402** no Rosette)  
**1407 G01** -22Ø (**1406** no Rosette)  
**1411 G01** -25Ø (**1410** no Rosette)  
**DPR01** Smooth Rosette only



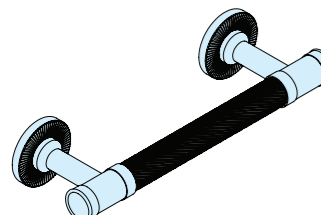
**DIAMOND KNURL**  
**1403 G02** -19Ø (**1402** no Rosette)  
**1407 G02** -22Ø (**1406** no Rosette)  
**1411 G02** -25Ø (**1410** no Rosette)  
**DPR02** Diamond Knurl Rosette only



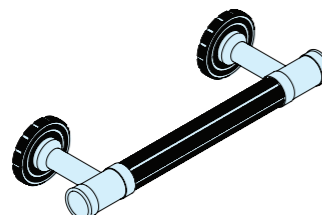
**DIAMOND MESH**  
**1403 G03** -19Ø (**1402** no Rosette)  
**1407 G03** -22Ø (**1406** no Rosette)  
**1411 G03** -25Ø (**1410** no Rosette)  
**DPR03** Diamond Mesh Rosette only



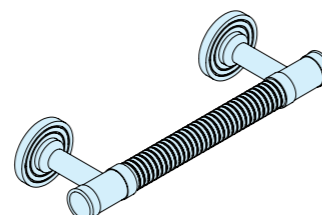
**LINEAR**  
**1403 G04** -19Ø (**1402** no Rosette)  
**1407 G04** -22Ø (**1406** no Rosette)  
**1411 G04** -25Ø (**1410** no Rosette)  
**DPR04** Linear Rosette only



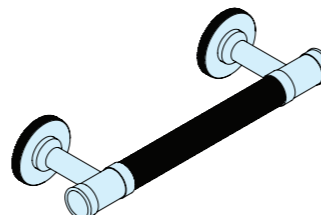
**SPIRAL**  
**1403 G05\*** -19Ø (**1402** no Rosette)  
**1407 G05\*** -22Ø (**1406** no Rosette)  
**1411 G05\*** -25Ø (**1410** no Rosette)  
 \*G05L or R (LH or RH)  
**DPR05** Starburst Rosette only



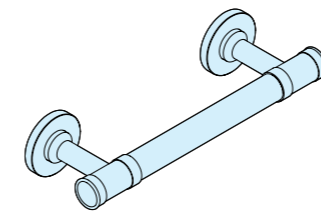
**ROTOR**  
**1403 G06** -19Ø (**1402** no Rosette)  
**1407 G06** -22Ø (**1406** no Rosette)  
**1411 G06** -25Ø (**1410** no Rosette)  
**DPR06** Rotor Rosette only



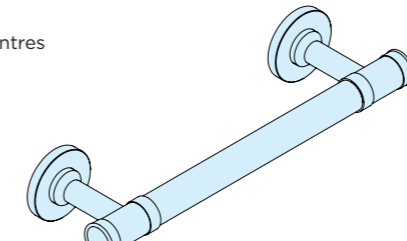
**GROOVE**  
**1403 G07** -19Ø (**1402** no Rosette)  
**1407 G07** -22Ø (**1406** no Rosette)  
**1411 G07** -25Ø (**1410** no Rosette)  
**DPR07** Groove Rosette only



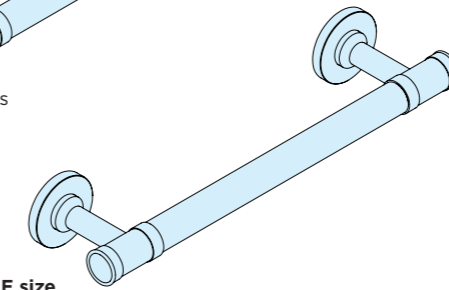
**SQUARE MESH**  
**1403 G08** -19Ø (**1402** no Rosette)  
**1407 G08** -22Ø (**1406** no Rosette)  
**1411 G08** -25Ø (**1410** no Rosette)  
**DPR08** Square Mesh Rosette only



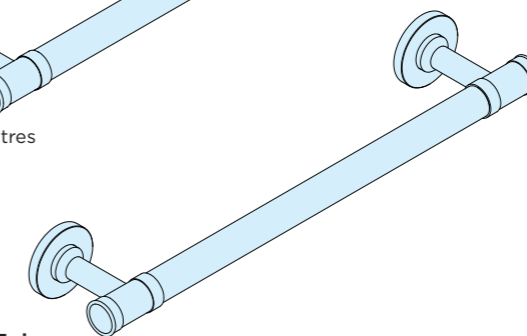
**C size**  
 160mm Centres



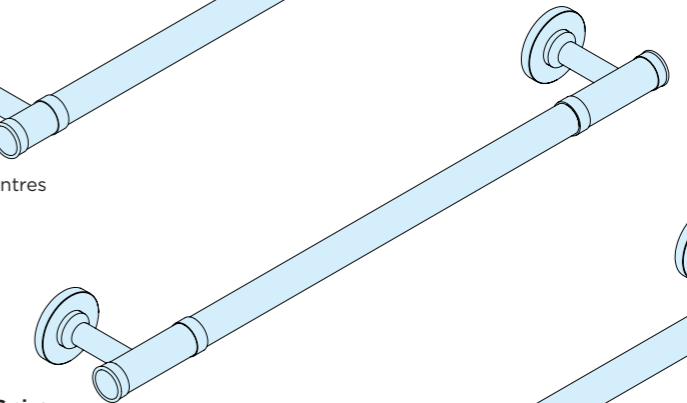
**D size**  
 192mm Centres



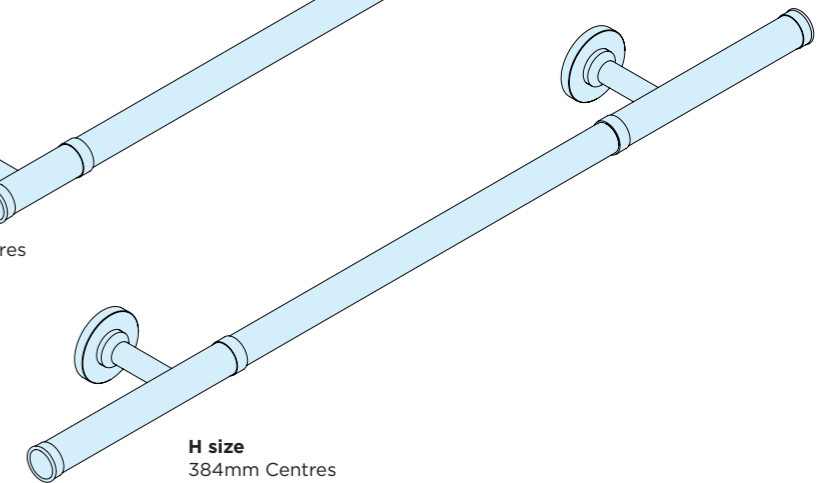
**E size**  
 224mm Centres



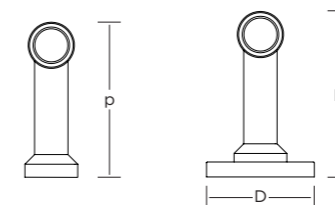
**F size**  
 288mm Centres



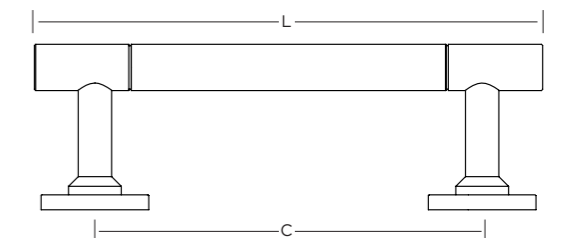
**G size**  
 384mm Centres



**H size**  
 384mm Centres

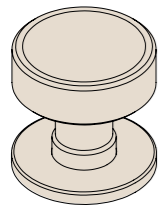


PULL DIA Ø	ROSETTE DIA (D)	PROJECTION	
		No Rose (p)	With Rose (P)
19mm	44	66	70
22mm	44	69	73
25mm	44	72	76

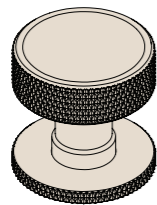


LENGTHS	C	D	E	F	G	H
Centres (C)	160	192	224	288	384	384
Length (L) 19 dia	210	242	274	338	434	600
Length (L) 22 dia	220	252	284	348	444	600
Length (L) 25 dia	230	262	294	358	454	600

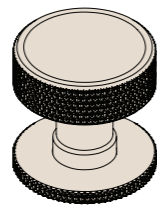
## CABINET KNOBS



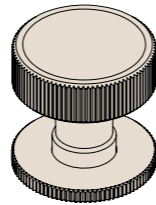
**SMOOTH**  
**0651** Knob & Rosette  
**0621** Knob only  
**SR01** Rosette only



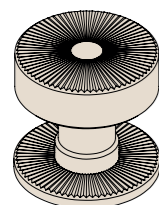
**DIAMOND KNURL**  
**0652** Knob & Rosette  
**0622** Knob only  
**SR02** Rosette only



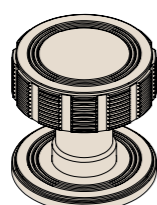
**DIAMOND MESH**  
**0653** Knob & Rosette  
**0623** Knob only  
**SR03** Rosette only



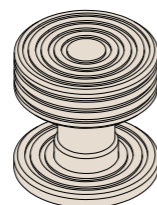
**LINEAR**  
**0654** Knob & Rosette  
**0624** Knob only  
**SR04** Rosette only



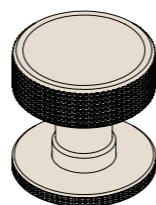
**STARBURST**  
**0658** Knob & Rosette  
**0628** Knob only  
**SR05** Rosette only



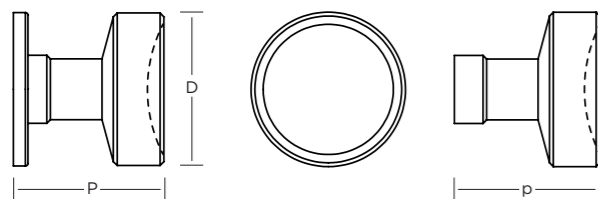
**ROTOR**  
**0619** Knob & Rosette  
**0618** Knob only  
**SR06** Rosette only



**GROOVE**  
**0657** Knob & Rosette  
**0627** Knob only  
**SR07** Rosette only



**SQUARE MESH**  
**0659** Knob & Rosette  
**0629** Knob only  
**SR08** Rosette only



	A	B	C
Knob size (D)	25 dia	32 dia	38 dia
Knob Projection (p)	25	30	34
Rosette size (D)	25 dia	32 dia	38 dia
Knob & Rosette Proj (P)	26	31	35

### HOW TO ORDER

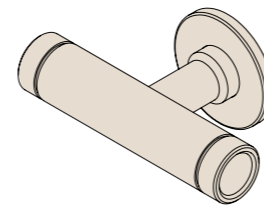
1. Select Cabinet Knob (eg. **0651**).
2. add FINISH (0651**PB**).
3. add SIZE (0651**PB/B**).

Choose DOWEL SCREW option if required (eg. 0651**PB/B/DS**). 

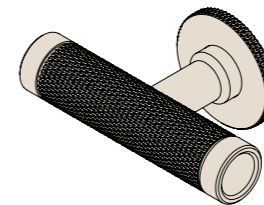
Mixed finish: select Cabinet Knob, finish & size, then Rosette type & finish (eg. 0651**PB/B/SR05AB**).

## CABINET T-PULLS

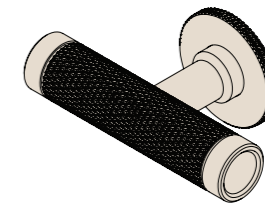
### PLAIN ENDS



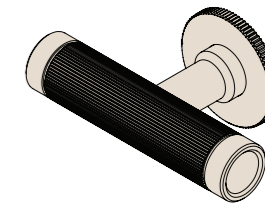
**SMOOTH**  
**1381 G01** -13Ø (**1380** no Rosette)  
**1385 G01** -16Ø (**1384** no Rosette)  
**1389 G01** -19Ø (**1388** no Rosette)  
**SR01** Rosette only



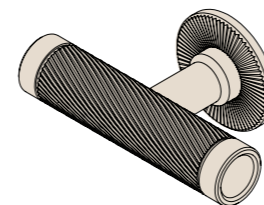
**DIAMOND KNURL**  
**1381 G02** -13Ø (**1380** no Rosette)  
**1385 G02** -16Ø (**1384** no Rosette)  
**1389 G02** -19Ø (**1388** no Rosette)  
**SR02** Rosette only



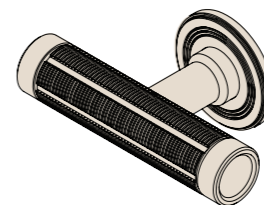
**DIAMOND MESH**  
**1381 G03** -13Ø (**1380** no Rosette)  
**1385 G03** -16Ø (**1384** no Rosette)  
**1389 G03** -19Ø (**1388** no Rosette)  
**SR03** Rosette only



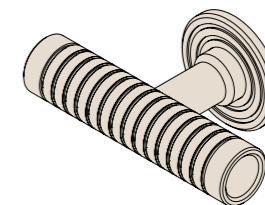
**LINEAR**  
**1381 G04** -13Ø (**1380** no Rosette)  
**1385 G04** -16Ø (**1384** no Rosette)  
**1389 G04** -19Ø (**1388** no Rosette)  
**SR04** Rosette only



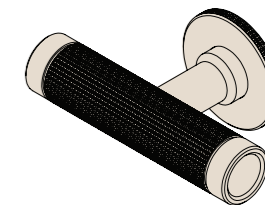
**SPIRAL**  
**1381 G05\*** -13Ø (**1380** no Rosette)  
**1385 G05\*** -16Ø (**1384** no Rosette)  
**1389 G05\*** -19Ø (**1388** no Rosette)  
 \*G05L or R (LH or RH)  
**SR05** Rosette only



**ROTOR**  
**1381 G06** -13Ø (**1380** no Rosette)  
**1385 G06** -16Ø (**1384** no Rosette)  
**1389 G06** -19Ø (**1388** no Rosette)  
**SR06** Rosette only



**GROOVE**  
**1381 G07** -13Ø (**1380** no Rosette)  
**1385 G07** -16Ø (**1384** no Rosette)  
**1389 G07** -19Ø (**1388** no Rosette)  
**SR07** Rosette only

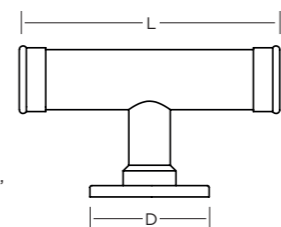


**SQUARE MESH**  
**1381 G08** -13Ø (**1380** no Rosette)  
**1385 G08** -16Ø (**1384** no Rosette)  
**1389 G08** -19Ø (**1388** no Rosette)  
**SR08** Rosette only

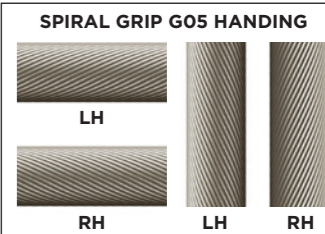
### HOW TO ORDER

1. Select T-Pull (eg. **1381**).
2. add GRIP ref. (**1381G01**).
3. add FINISH (**1381G01PB**).

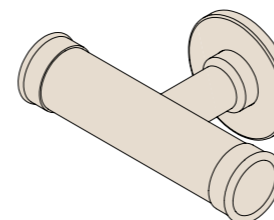
Mixed finish: select Cabinet T-Pull & finish, Grip ref. & finish, then Rosette type & finish (eg. **1381PB/G01AB/SR05AB**).



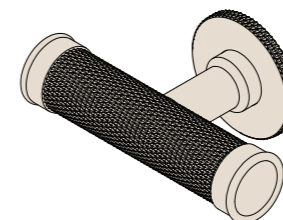
DIAMETER	13mm	16mm	19mm
Length (L)	61	69	71
Projection (P)	33	39	45
Rosette Dia. (D)	25	32	38
Proj. no Rosette	32	38	44



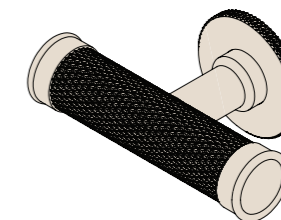
### RINGED ENDS



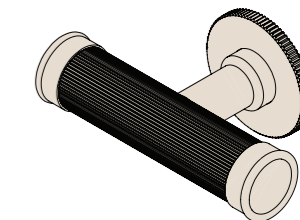
**SMOOTH**  
**1383 G01** -13Ø (**1382** no Rosette)  
**1387 G01** -16Ø (**1386** no Rosette)  
**1391 G01** -19Ø (**1390** no Rosette)  
**SR01** Rosette only



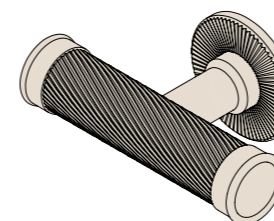
**DIAMOND KNURL**  
**1383 G02** -13Ø (**1382** no Rosette)  
**1387 G02** -16Ø (**1386** no Rosette)  
**1391 G02** -19Ø (**1390** no Rosette)  
**SR02** Rosette only



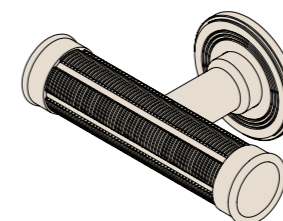
**DIAMOND MESH**  
**1383 G03** -13Ø (**1382** no Rosette)  
**1387 G03** -16Ø (**1386** no Rosette)  
**1391 G03** -19Ø (**1390** no Rosette)  
**SR03** Rosette only



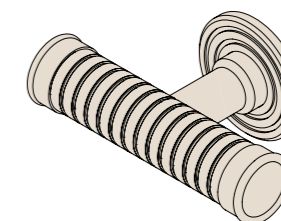
**LINEAR**  
**1383 G04** -13Ø (**1382** no Rosette)  
**1387 G04** -16Ø (**1386** no Rosette)  
**1391 G04** -19Ø (**1390** no Rosette)  
**SR04** Rosette only



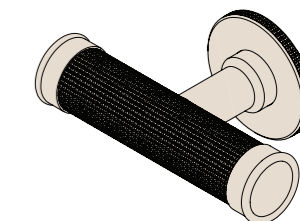
**SPIRAL**  
**1383 G05\*** -13Ø (**1382** no Rosette)  
**1387 G05\*** -16Ø (**1386** no Rosette)  
**1391 G05\*** -19Ø (**1390** no Rosette)  
 \*G05L or R (LH or RH)  
**SR05** Rosette only



**ROTOR**  
**1383 G06** -13Ø (**1382** no Rosette)  
**1387 G06** -16Ø (**1386** no Rosette)  
**1391 G06** -19Ø (**1390** no Rosette)  
**SR06** Rosette only



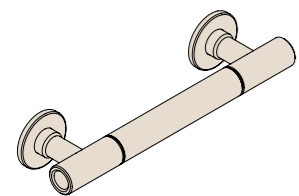
**GROOVE**  
**1383 G07** -13Ø (**1382** no Rosette)  
**1387 G07** -16Ø (**1386** no Rosette)  
**1391 G07** -19Ø (**1390** no Rosette)  
**SR07** Rosette only



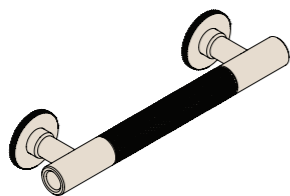
**SQUARE MESH**  
**1383 G08** -13Ø (**1382** no Rosette)  
**1387 G08** -16Ø (**1386** no Rosette)  
**1391 G08** -19Ø (**1390** no Rosette)  
**SR08** Rosette only

# CABINET PULLS

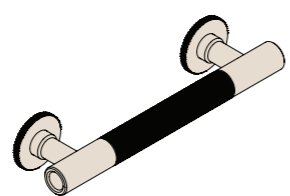
## PLAIN ENDS



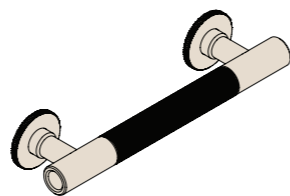
**SMOOTH**  
**1421 G01** -13Ø (**1420** no Rosette)  
**1425 G01** -16Ø (**1424** no Rosette)  
**1429 G01** -19Ø (**1428** no Rosette)  
**SR01** Rosette only



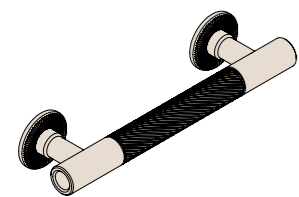
**DIAMOND KNURL**  
**1421 G02** -13Ø (**1420** no Rosette)  
**1425 G02** -16Ø (**1424** no Rosette)  
**1429 G02** -19Ø (**1428** no Rosette)  
**SR02** Rosette only



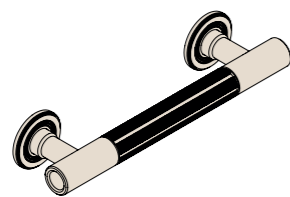
**DIAMOND MESH**  
**1421 G03** -13Ø (**1420** no Rosette)  
**1425 G03** -16Ø (**1424** no Rosette)  
**1429 G03** -19Ø (**1428** no Rosette)  
**SR03** Rosette only



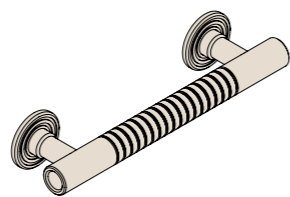
**LINEAR**  
**1421 G04** -13Ø (**1420** no Rosette)  
**1425 G04** -16Ø (**1424** no Rosette)  
**1429 G04** -19Ø (**1428** no Rosette)  
**SR04** Rosette only



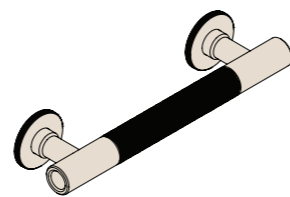
**SPIRAL**  
**1421 G05\*** -13Ø (**1420** no Rosette)  
**1425 G05\*** -16Ø (**1424** no Rosette)  
**1429 G05\*** -19Ø (**1428** no Rosette)  
**\*G05L or R** (LH or RH)  
**SR05** Rosette only



**ROTOR**  
**1421 G06** -13Ø (**1420** no Rosette)  
**1425 G06** -16Ø (**1424** no Rosette)  
**1429 G06** -19Ø (**1428** no Rosette)  
**SR06** Rosette only



**GROOVE**  
**1421 G07** -13Ø (**1420** no Rosette)  
**1425 G07** -16Ø (**1424** no Rosette)  
**1429 G07** -19Ø (**1428** no Rosette)  
**SR07** Rosette only



**SQUARE MESH**  
**1421 G08** -13Ø (**1420** no Rosette)  
**1425 G08** -16Ø (**1424** no Rosette)  
**1429 G08** -19Ø (**1428** no Rosette)  
**SR08** Rosette only

### HOW TO ORDER

1. Select Cabinet Pull (eg. **1421**).
2. add SIZE (**1421B**).
3. add GRIP design (**1421B/G01**).
4. add FINISH\* (**1421B/G01PB**).

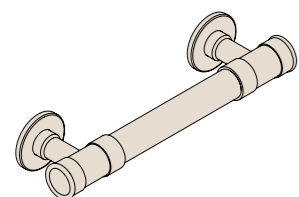
\*Cabinet Pulls are not available in solid bronze finishes.

Mixed finish: For Pull only (no Rosette) select Pull code, size & finish, then add grip ref & finish (eg. **1420B/PB/G01SN**).

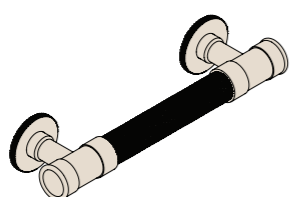
For Pull with Rosette select Pull code, size & finish, then add grip ref & finish, then Rosette type and finish (eg. **1421B/PB/G01SN/SR05SC**).



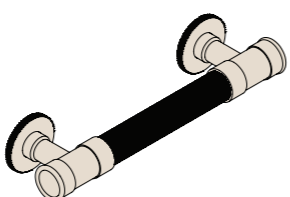
## RINGED ENDS



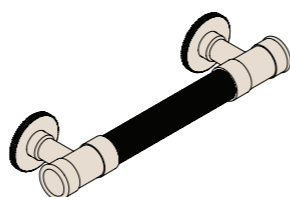
**SMOOTH**  
**1423 G01** -13Ø (**1422** no Rosette)  
**1427 G01** -16Ø (**1426** no Rosette)  
**1431 G01** -19Ø (**1430** no Rosette)  
**SR01** Rosette only



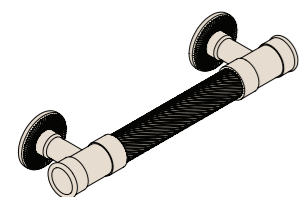
**DIAMOND KNURL**  
**1423 G02** -13Ø (**1422** no Rosette)  
**1427 G02** -16Ø (**1426** no Rosette)  
**1431 G02** -19Ø (**1430** no Rosette)  
**SR02** Rosette only



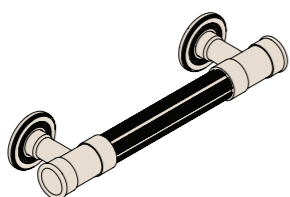
**DIAMOND MESH**  
**1423 G03** -13Ø (**1422** no Rosette)  
**1427 G03** -16Ø (**1426** no Rosette)  
**1431 G03** -19Ø (**1430** no Rosette)  
**SR03** Rosette only



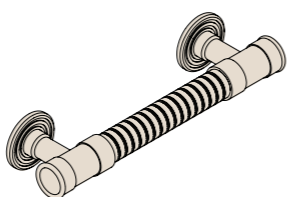
**LINEAR**  
**1423 G04** -13Ø (**1422** no Rosette)  
**1427 G04** -16Ø (**1426** no Rosette)  
**1431 G04** -19Ø (**1430** no Rosette)  
**SR04** Rosette only



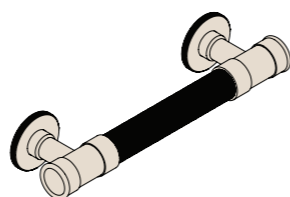
**SPIRAL**  
**1423 G05\*** -13Ø (**1422** no Rosette)  
**1427 G05\*** -16Ø (**1426** no Rosette)  
**1431 G05\*** -19Ø (**1430** no Rosette)  
**\*G05L or R** (LH or RH)  
**SR05** Rosette only



**ROTOR**  
**1423 G06** -13Ø (**1422** no Rosette)  
**1427 G06** -16Ø (**1426** no Rosette)  
**1431 G06** -19Ø (**1430** no Rosette)  
**SR06** Rosette only

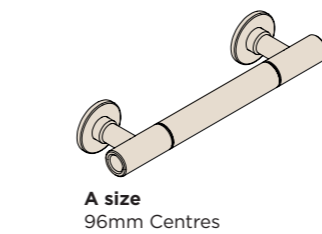


**GROOVE**  
**1423 G07** -13Ø (**1422** no Rosette)  
**1427 G07** -16Ø (**1426** no Rosette)  
**1431 G07** -19Ø (**1430** no Rosette)  
**SR07** Rosette only

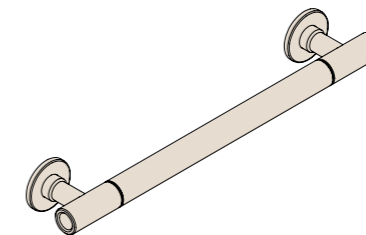


**SQUARE MESH**  
**1423 G08** -13Ø (**1422** no Rosette)  
**1427 G08** -16Ø (**1426** no Rosette)  
**1431 G08** -19Ø (**1430** no Rosette)  
**SR08** Rosette only

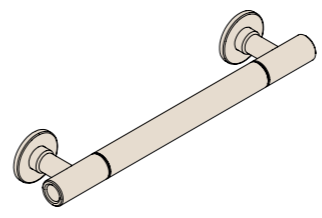
# CABINET PULLS



**A size**  
 96mm Centres



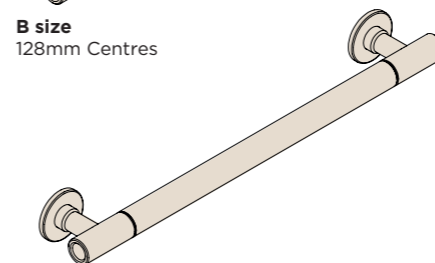
**C size**  
 160mm Centres



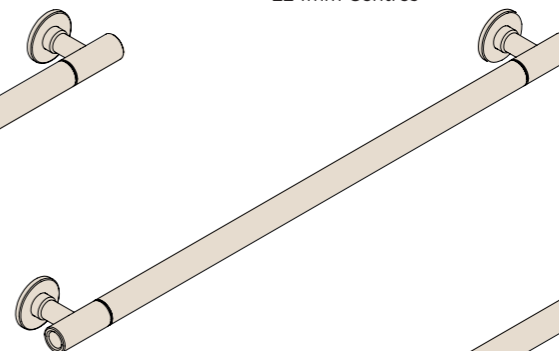
**B size**  
 128mm Centres



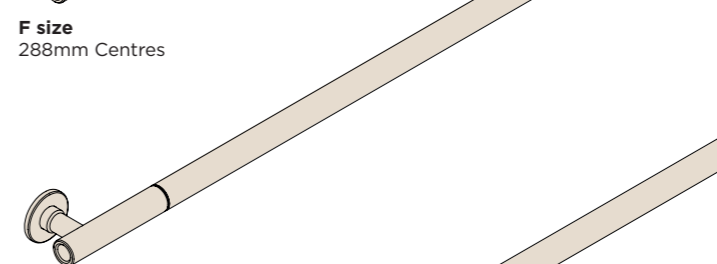
**E size**  
 224mm Centres



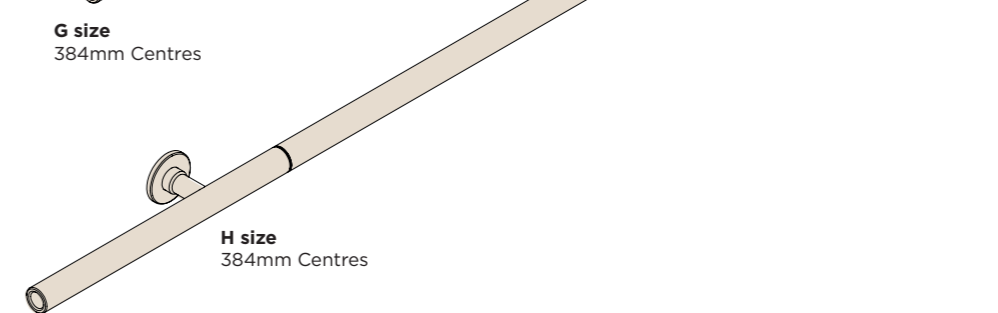
**D size**  
 192mm Centres



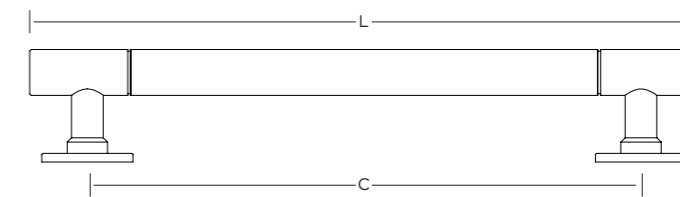
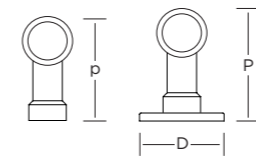
**F size**  
 288mm Centres



**G size**  
 384mm Centres



**H size**  
 384mm Centres



PULL DIA Ø	ROSETTE DIA (D)	PROJECTION	
		No Rose (p)	With Rose (P)
13mm	25	33	34
16mm	32	39	41
19mm	38	45	47

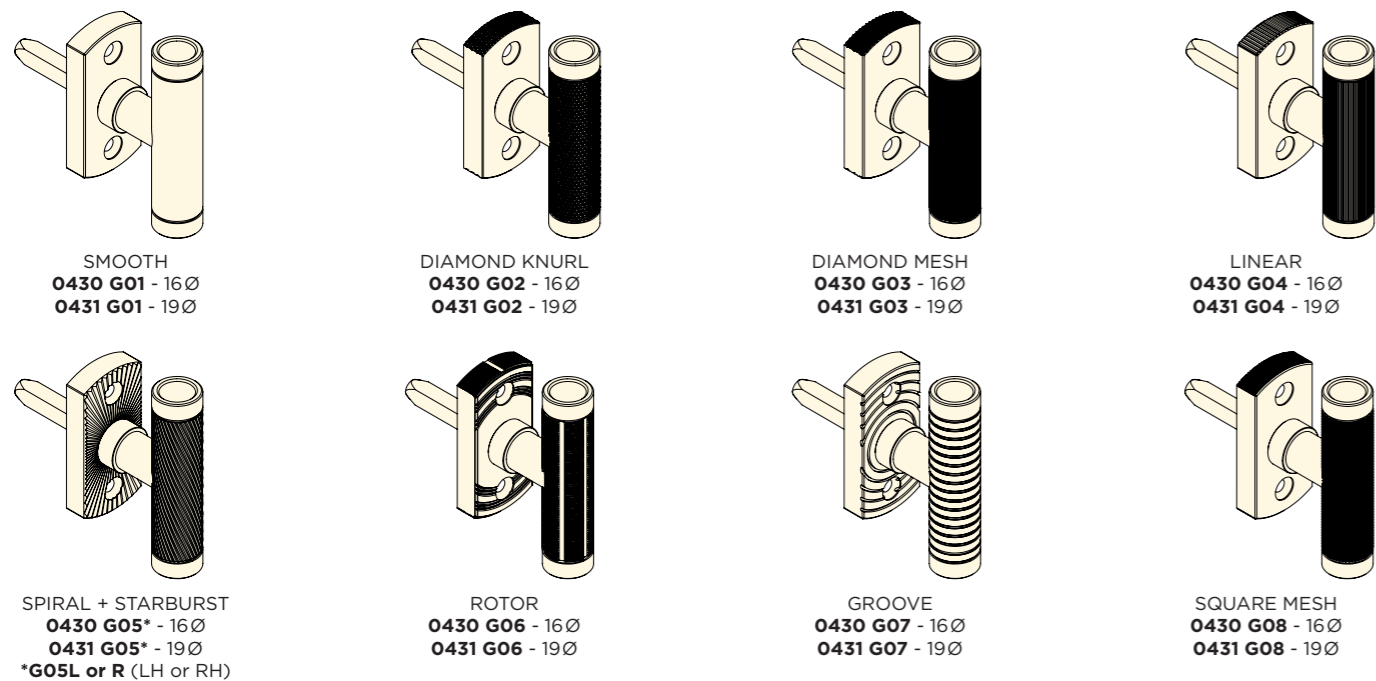
LENGTHS	A	B	C	D	E	F	G	H
Centres (C)	96	128	160	192	224	288	384	384
Length (L) 13 dia	126	158	190	222	254	318	414	600
Length (L) 16 dia	136	168	200	232	264	328	424	600
Length (L) 19 dia	146	178	210	242	274	338	434	600



# WINDOW TILT & TURN T-HANDLES

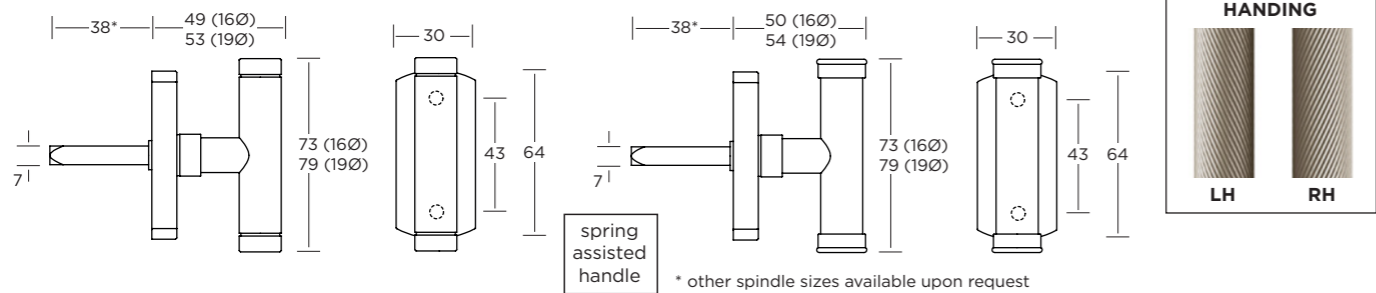
Matching design detailed base

## PLAIN ENDS

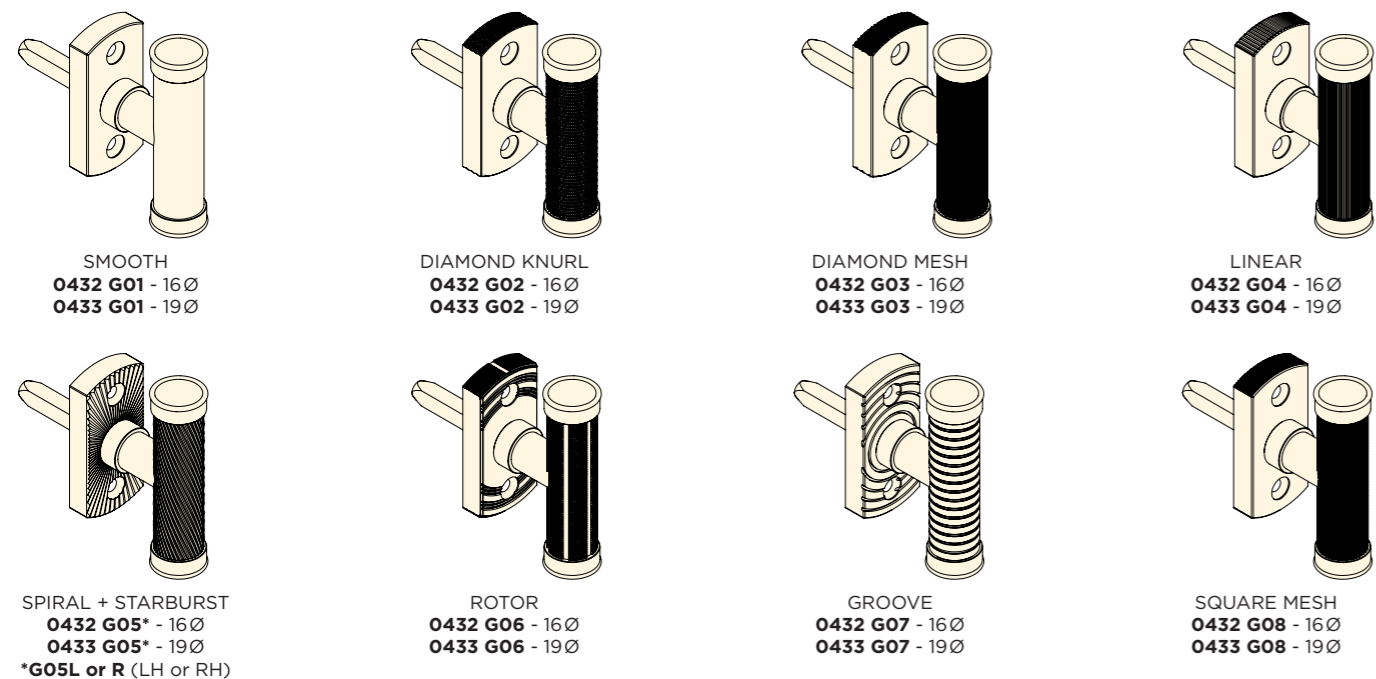


**HOW TO ORDER** 1. select HANDLE (eg. 0430). 2. add GRIP ref. (0430G01). 3. add FINISH (0430G01PB).  
Mixed finish: select Handle & finish, then Grip ref. & finish (eg. 0430PB/G01AB).

Supplied with finish matched M5 x 40mm machine screws and fitted stainless steel spindle.



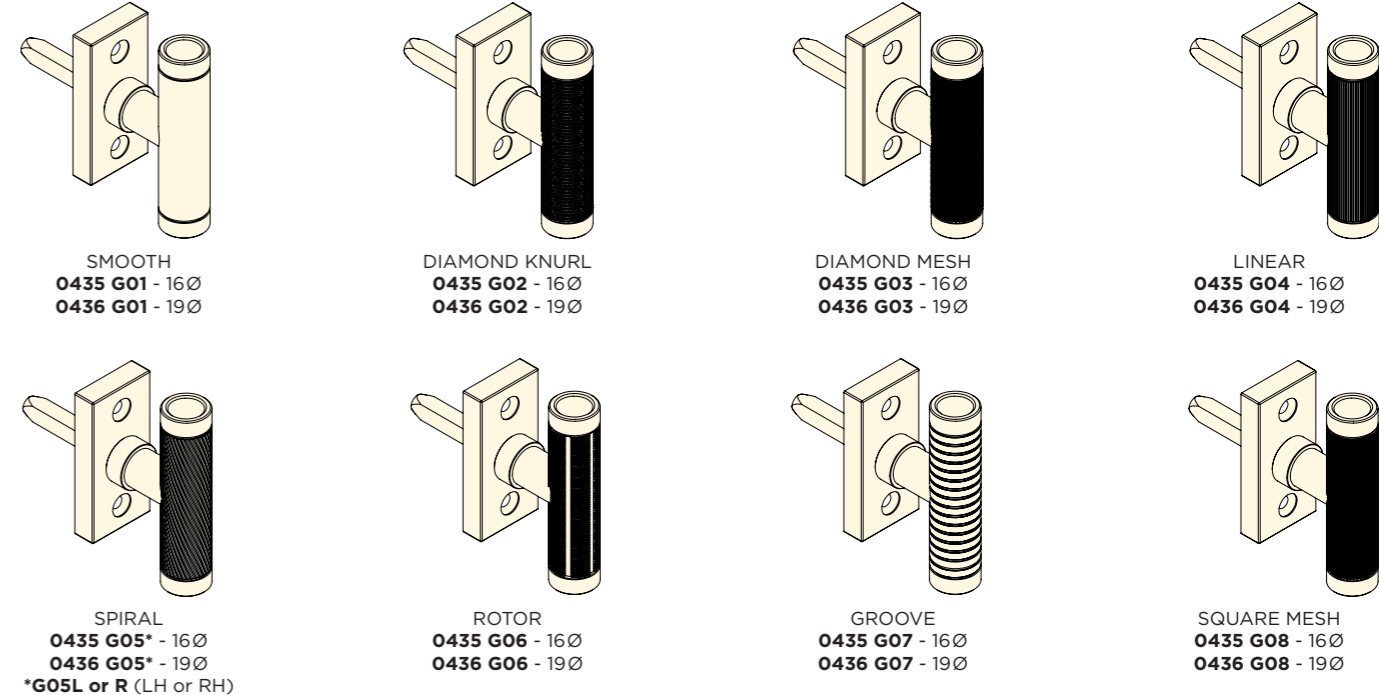
## RINGED ENDS



# WINDOW TILT & TURN T-HANDLES

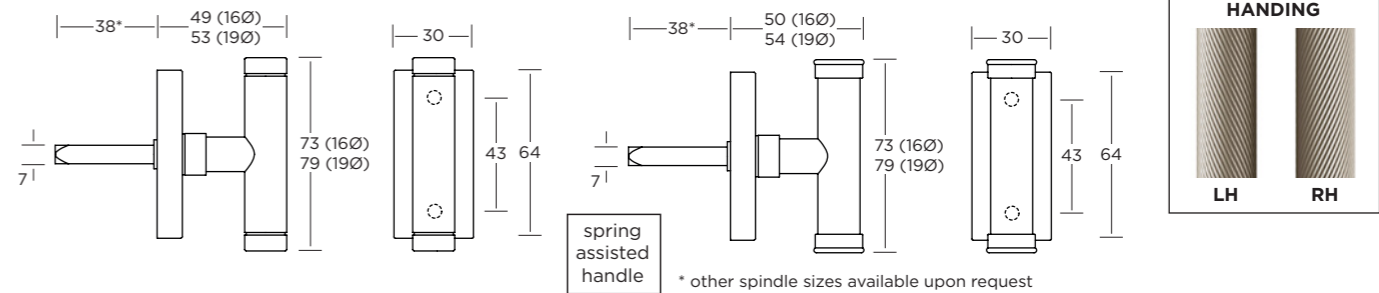
Rectangular plain base

## PLAIN ENDS

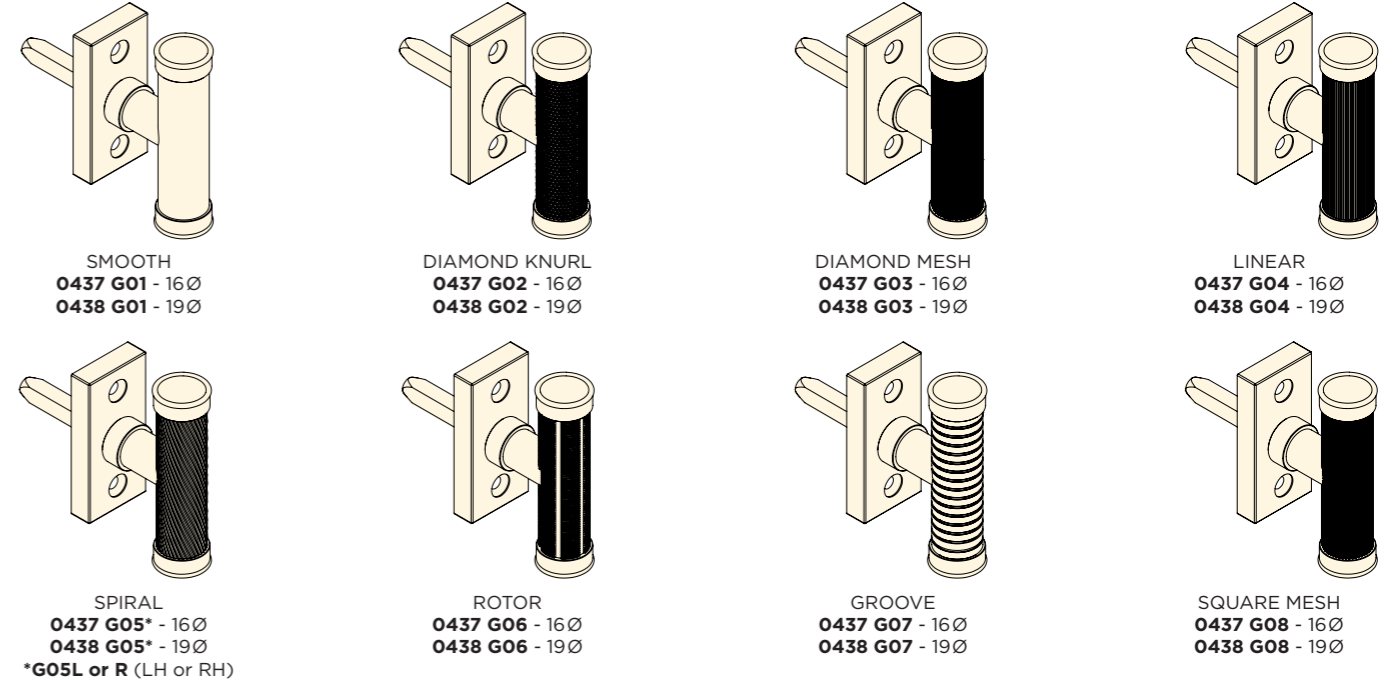


**HOW TO ORDER** 1. select HANDLE (eg. 0435). 2. add GRIP ref. (0435G01). 3. add FINISH (0435G01PB).  
Mixed finish: select Handle & finish, then Grip ref. & finish (eg. 0435PB/G01AB).

Supplied with finish matched M5 x 40mm machine screws and fitted stainless steel spindle.



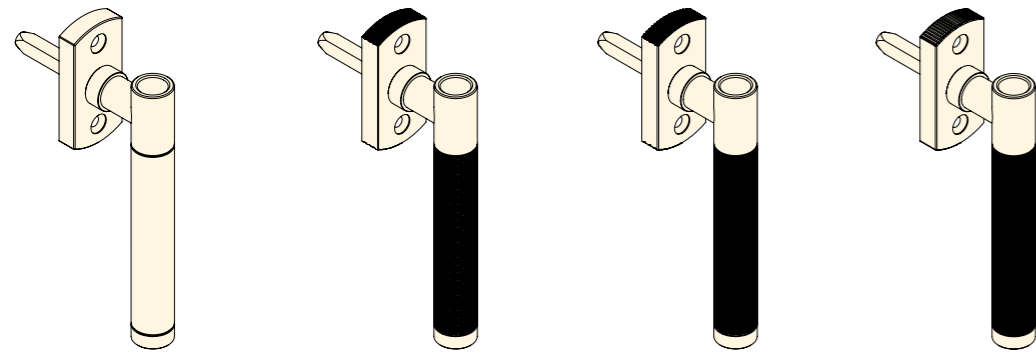
## RINGED ENDS



# WINDOW TILT & TURN HANDLES

With matching design detailed base

## PLAIN NECK / PLAIN TIP

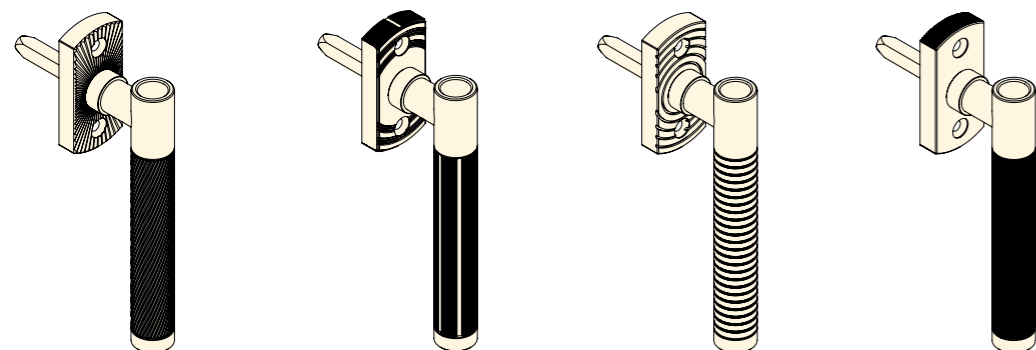


**SMOOTH**  
0400 G01 - 16Ø  
0401 G01 - 19Ø

**DIAMOND KNURL**  
0400 G02 - 16Ø  
0401 G02 - 19Ø

**DIAMOND MESH**  
0400 G03 - 16Ø  
0401 G03 - 19Ø

**LINEAR**  
0400 G04 - 16Ø  
0401 G04 - 19Ø



**SPIRAL + STARBURST**  
0400 G05\* - 16Ø  
0401 G05\* - 19Ø  
\*G05L or R (LH or RH)

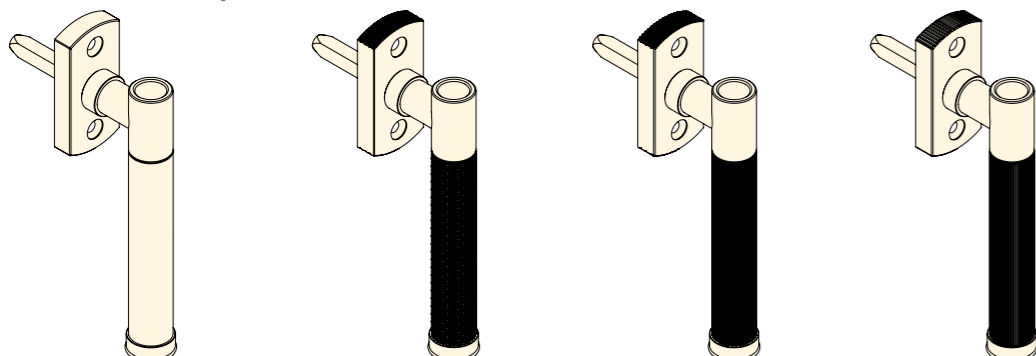
**ROTOR**  
0400 G06 - 16Ø  
0401 G06 - 19Ø

**GROOVE**  
0400 G07 - 16Ø  
0401 G07 - 19Ø

**SQUARE MESH**  
0400 G08 - 16Ø  
0401 G08 - 19Ø

**HOW TO ORDER** 1. select HANDLE (eg. 0400). 2. add GRIP ref. (0400G01). 3. add FINISH (0400G01PB).  
Mixed finish: select Handle & finish, then Grip ref. & finish (eg. 0400PB/G01AB).

## PLAIN NECK / RINGED TIP

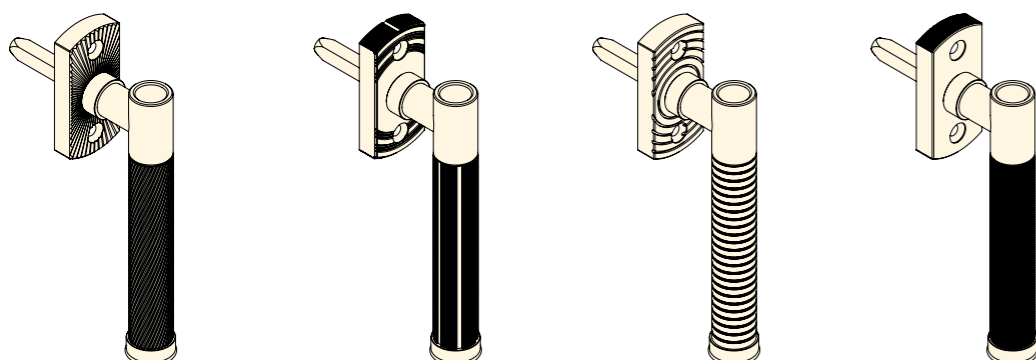


**SMOOTH**  
0404 G01 - 16Ø  
0405 G01 - 19Ø

**DIAMOND KNURL**  
0404 G02 - 16Ø  
0405 G02 - 19Ø

**DIAMOND MESH**  
0404 G03 - 16Ø  
0405 G03 - 19Ø

**LINEAR**  
0404 G04 - 16Ø  
0405 G04 - 19Ø



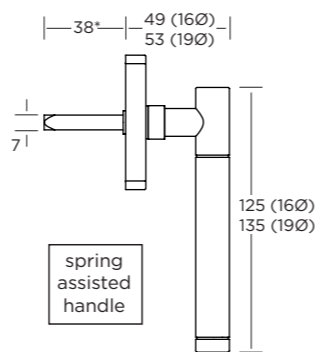
**SPIRAL + STARBURST**  
0404 G05\* - 16Ø  
0405 G05\* - 19Ø  
\*G05L or R (LH or RH)

**ROTOR**  
0404 G06 - 16Ø  
0405 G06 - 19Ø

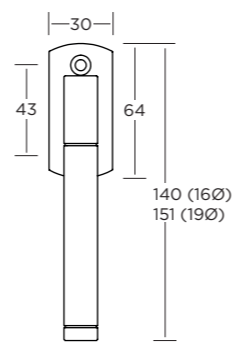
**GROOVE**  
0404 G07 - 16Ø  
0405 G07 - 19Ø

**SQUARE MESH**  
0404 G08 - 16Ø  
0405 G08 - 19Ø

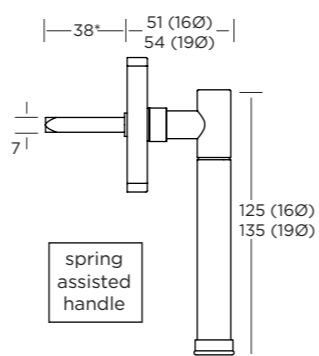
Supplied with finish matched M5 x 40mm machine screws and fitted stainless steel spindle.



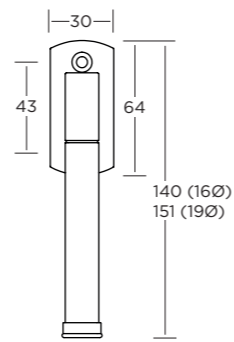
spring assisted handle



LH RH



spring assisted handle

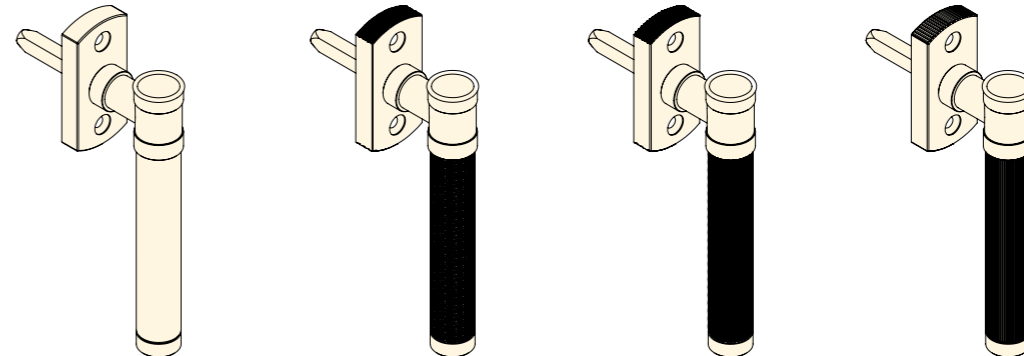


\* other spindle sizes available upon request

# WINDOW TILT & TURN HANDLES

With matching design detailed base

## RINGED NECK / PLAIN TIP

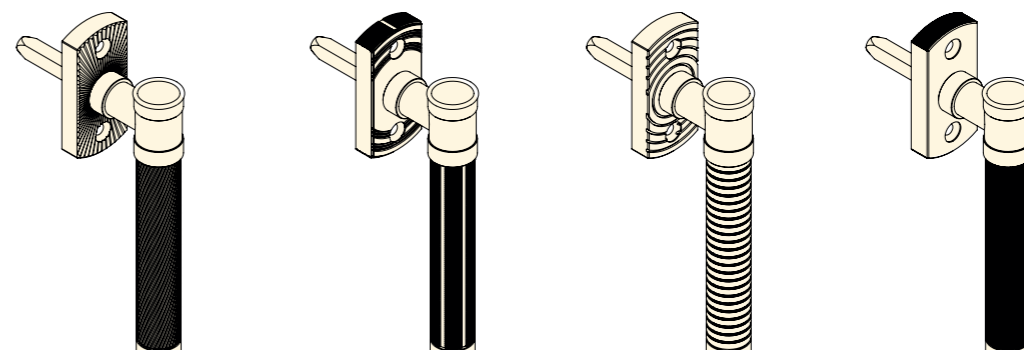


**SMOOTH**  
0406 G01 - 16Ø  
0407 G01 - 19Ø

**DIAMOND KNURL**  
0406 G02 - 16Ø  
0407 G02 - 19Ø

**DIAMOND MESH**  
0406 G03 - 16Ø  
0407 G03 - 19Ø

**LINEAR**  
0406 G04 - 16Ø  
0407 G04 - 19Ø



**SPIRAL + STARBURST**  
0406 G05\* - 16Ø  
0407 G05\* - 19Ø  
\*G05L or R (LH or RH)

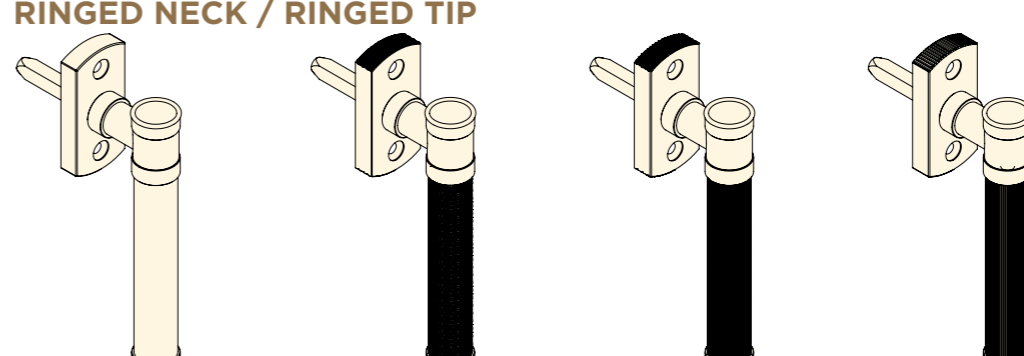
**ROTOR**  
0406 G06 - 16Ø  
0407 G06 - 19Ø

**GROOVE**  
0406 G07 - 16Ø  
0407 G07 - 19Ø

**SQUARE MESH**  
0406 G08 - 16Ø  
0407 G08 - 19Ø

**HOW TO ORDER** 1. select HANDLE (eg. 0406). 2. add GRIP ref. (0406G01). 3. add FINISH (0406G01PB).  
Mixed finish: select Handle & finish, then Grip ref. & finish (eg. 0406PB/G01AB).

## RINGED NECK / RINGED TIP

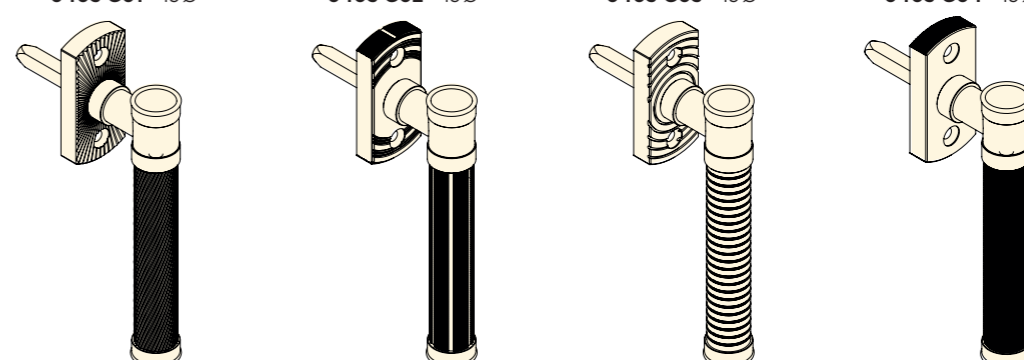


**SMOOTH**  
0402 G01 - 16Ø  
0403 G01 - 19Ø

**DIAMOND KNURL**  
0402 G02 - 16Ø  
0403 G02 - 19Ø

**DIAMOND MESH**  
0402 G03 - 16Ø  
0403 G03 - 19Ø

**LINEAR**  
0402 G04 - 16Ø  
0403 G04 - 19Ø



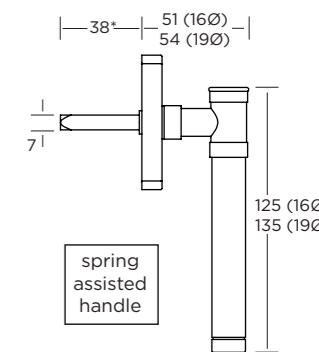
**SPIRAL + STARBURST**  
0402 G05\* - 16Ø  
0403 G05\* - 19Ø  
\*G05L or R (LH or RH)

**ROTOR**  
0402 G06 - 16Ø  
0403 G06 - 19Ø

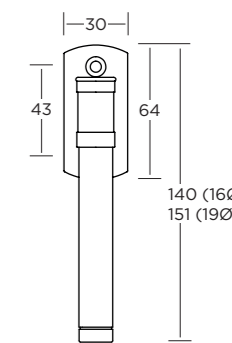
**GROOVE**  
0402 G07 - 16Ø  
0403 G07 - 19Ø

**SQUARE MESH**  
0402 G08 - 16Ø  
0403 G08 - 19Ø

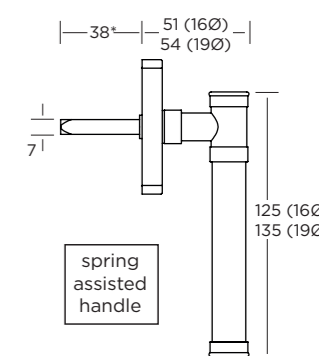
Supplied with finish matched M5 x 40mm machine screws and fitted stainless steel spindle.



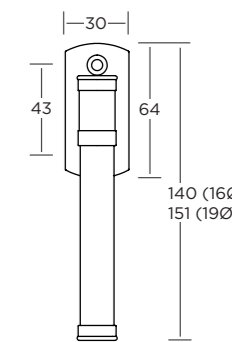
spring assisted handle



LH RH



spring assisted handle

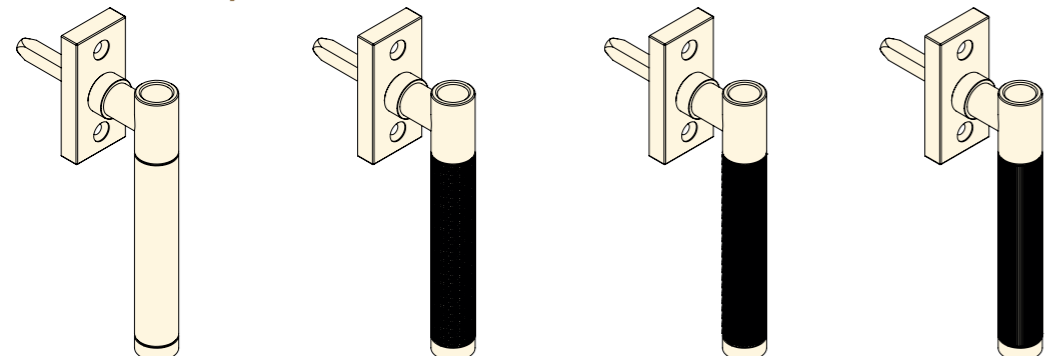


\* other spindle sizes available upon request

# WINDOW TILT & TURN HANDLES

## Plain rectangular base

### PLAIN NECK / PLAIN TIP

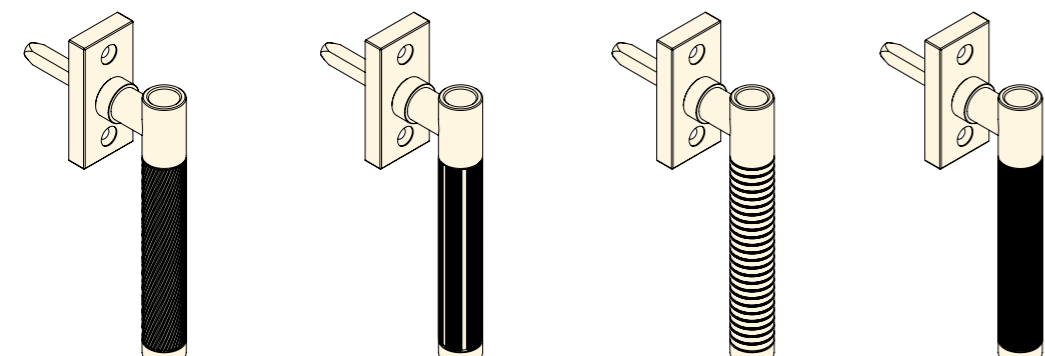


**SMOOTH**  
0420 G01 - 16Ø  
0421 G01 - 19Ø

**DIAMOND KNURL**  
0420 G02 - 16Ø  
0421 G02 - 19Ø

**DIAMOND MESH**  
0420 G03 - 16Ø  
0421 G03 - 19Ø

**LINEAR**  
0420 G04 - 16Ø  
0421 G04 - 19Ø



**SPIRAL**  
0420 G05\* - 16Ø  
0421 G05\* - 19Ø  
\*G05L or R (LH or RH)

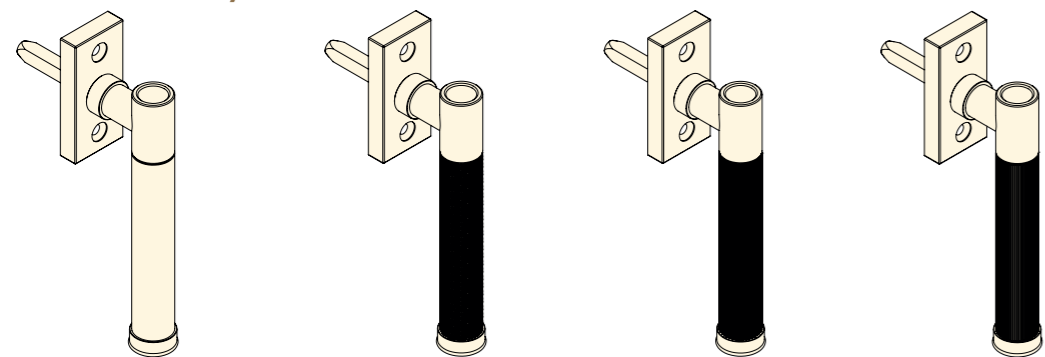
**ROTOR**  
0420 G06 - 16Ø  
0421 G06 - 19Ø

**GROOVE**  
0420 G07 - 16Ø  
0421 G07 - 19Ø

**SQUARE MESH**  
0420 G08 - 16Ø  
0421 G08 - 19Ø

**HOW TO ORDER** 1. select HANDLE (eg. 0420). 2. add GRIP ref. (0420G01). 3. add FINISH (0420G01PB).  
Mixed finish: select Handle & finish, then Grip ref. & finish (eg. 0420PB/G01AB).

### PLAIN NECK / RINGED TIP

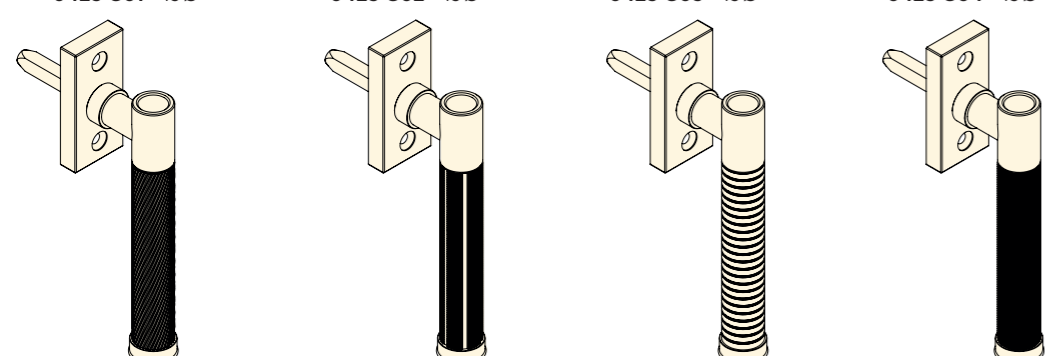


**SMOOTH**  
0424 G01 - 16Ø  
0425 G01 - 19Ø

**DIAMOND KNURL**  
0424 G02 - 16Ø  
0425 G02 - 19Ø

**DIAMOND MESH**  
0424 G03 - 16Ø  
0425 G03 - 19Ø

**LINEAR**  
0424 G04 - 16Ø  
0425 G04 - 19Ø



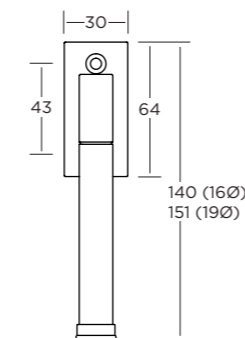
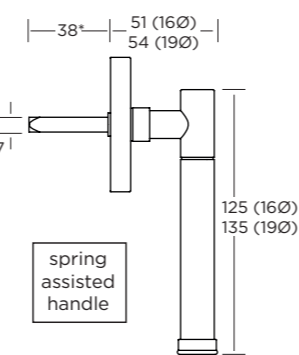
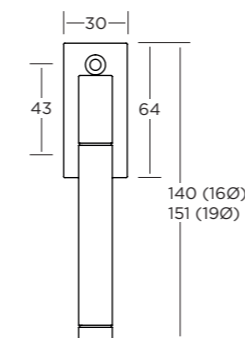
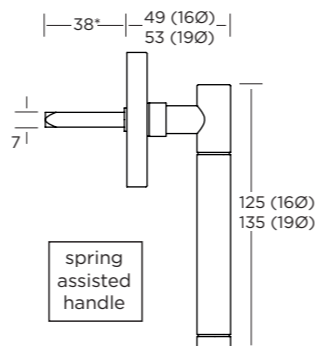
**SPIRAL**  
0424 G05\* - 16Ø  
0425 G05\* - 19Ø  
\*G05L or R (LH or RH)

**ROTOR**  
0424 G06 - 16Ø  
0425 G06 - 19Ø

**GROOVE**  
0424 G07 - 16Ø  
0425 G07 - 19Ø

**SQUARE MESH**  
0424 G08 - 16Ø  
0425 G08 - 19Ø

Supplied with finish matched M5 x 40mm machine screws and fitted stainless steel spindle.

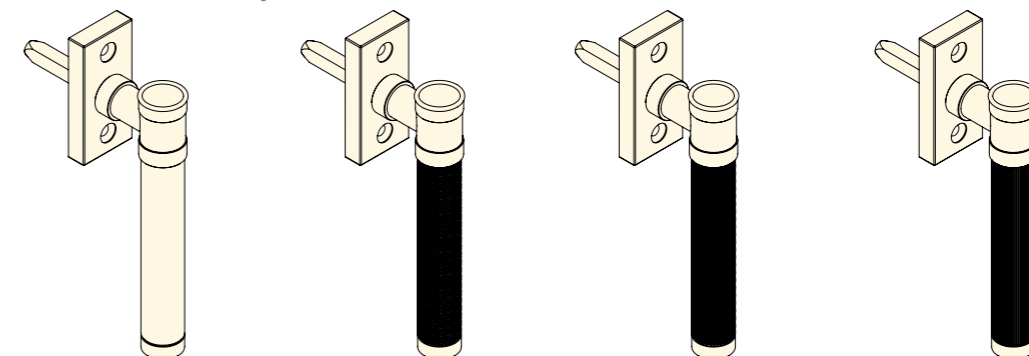


\* other spindle sizes available upon request

# WINDOW TILT & TURN HANDLES

## Plain rectangular base

### RINGED NECK / PLAIN TIP

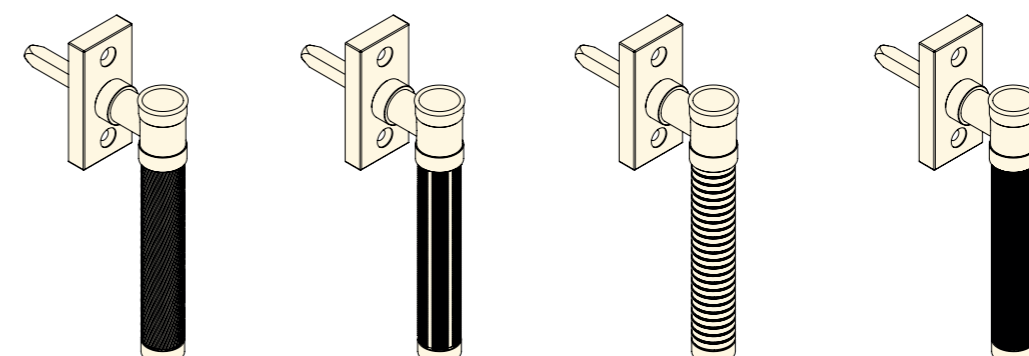


**SMOOTH**  
0426 G01 - 16Ø  
0427 G01 - 19Ø

**DIAMOND KNURL**  
0426 G02 - 16Ø  
0427 G02 - 19Ø

**DIAMOND MESH**  
0426 G03 - 16Ø  
0427 G03 - 19Ø

**LINEAR**  
0426 G04 - 16Ø  
0427 G04 - 19Ø



**SPIRAL**  
0426 G05\* - 16Ø  
0427 G05\* - 19Ø  
\*G05L or R (LH or RH)

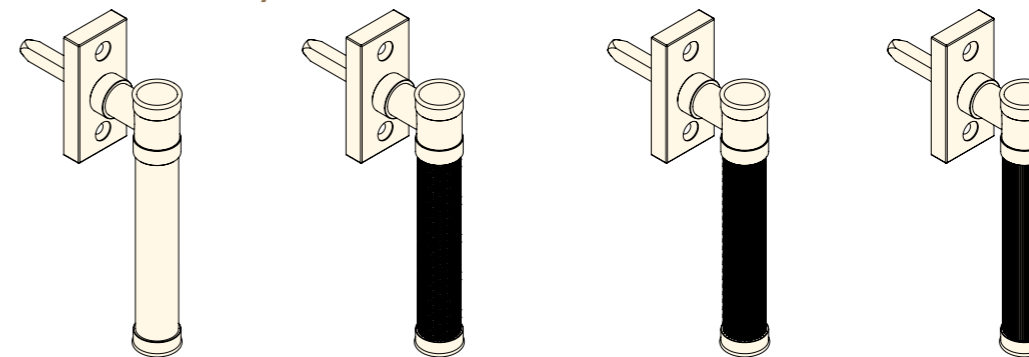
**ROTOR**  
0426 G06 - 16Ø  
0427 G06 - 19Ø

**GROOVE**  
0426 G07 - 16Ø  
0427 G07 - 19Ø

**SQUARE MESH**  
0426 G08 - 16Ø  
0427 G08 - 19Ø

**HOW TO ORDER** 1. select HANDLE (eg. 0426). 2. add GRIP ref. (0426G01). 3. add FINISH (0426G01PB).  
Mixed finish: select Handle & finish, then Grip ref. & finish (eg. 0426PB/G01AB).

### RINGED NECK / RINGED TIP

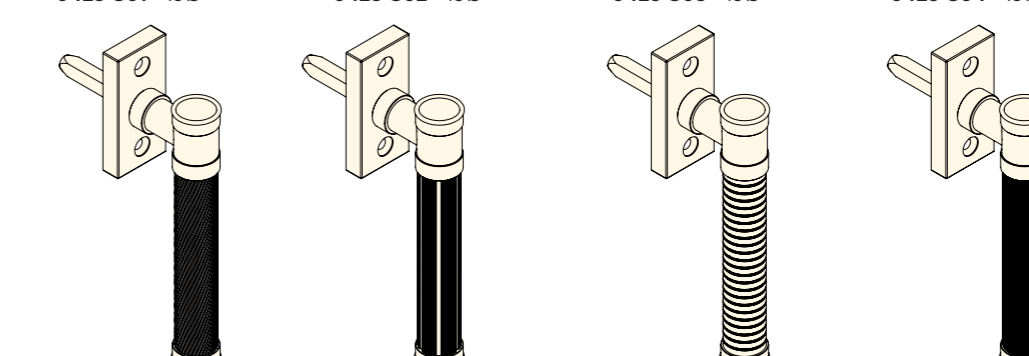


**SMOOTH**  
0422 G01 - 16Ø  
0423 G01 - 19Ø

**DIAMOND KNURL**  
0422 G02 - 16Ø  
0423 G02 - 19Ø

**DIAMOND MESH**  
0422 G03 - 16Ø  
0423 G03 - 19Ø

**LINEAR**  
0422 G04 - 16Ø  
0423 G04 - 19Ø



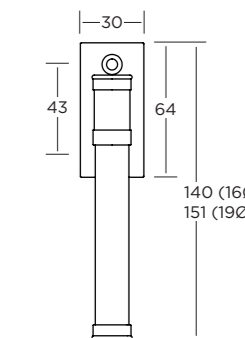
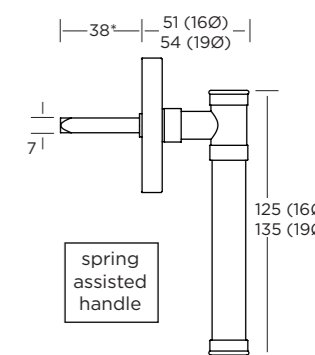
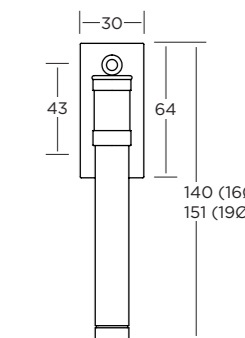
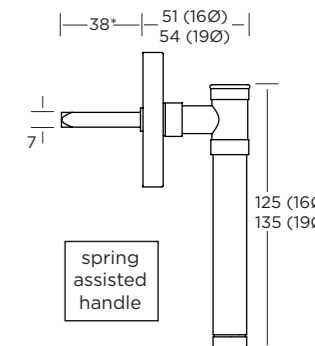
**SPIRAL**  
0422 G05\* - 16Ø  
0423 G05\* - 19Ø  
\*G05L or R (LH or RH)

**ROTOR**  
0422 G06 - 16Ø  
0423 G06 - 19Ø

**GROOVE**  
0422 G07 - 16Ø  
0423 G07 - 19Ø

**SQUARE MESH**  
0422 G08 - 16Ø  
0423 G08 - 19Ø

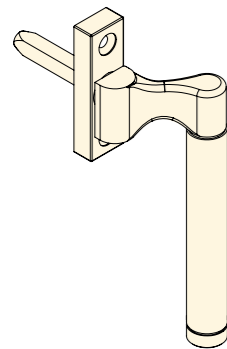
Supplied with finish matched M5 x 40mm machine screws and fitted stainless steel spindle.



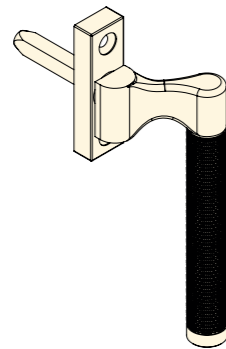
\* other spindle sizes available upon request

# WINDOW ESPAGNOLETTE HANDLES

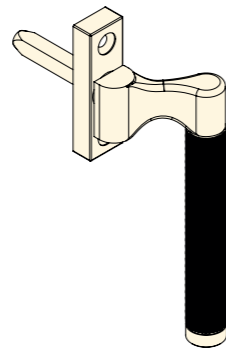
## PLAIN TIP



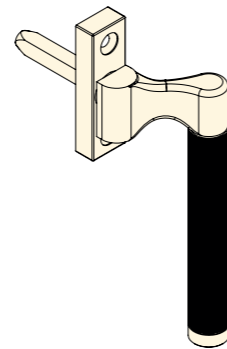
SMOOTH  
0315 G01 - 16Ø



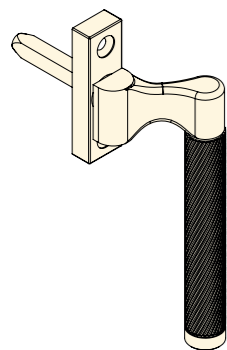
DIAMOND KNURL  
0315 G02 - 16Ø



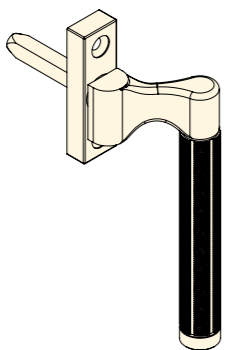
DIAMOND MESH  
0315 G03 - 16Ø



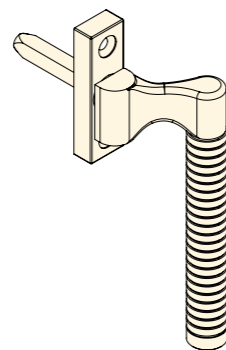
LINEAR  
0315 G04 - 16Ø



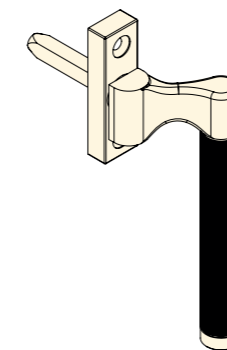
SPIRAL  
0315 G05 - 16Ø



ROTOR  
0315 G06 - 16Ø

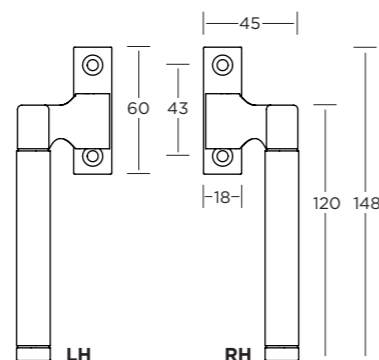
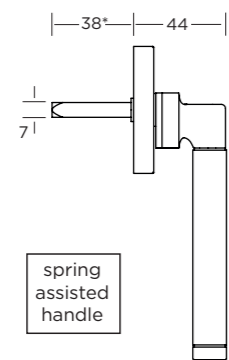
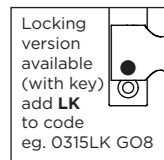


GROOVE  
0315 G07 - 16Ø



SQUARE MESH  
0315 G08 - 16Ø

Supplied with finish matched M5 x 40mm machine screws and fitted stainless steel spindle.



\* other spindle sizes available upon request

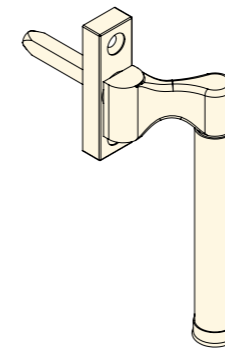
### HOW TO ORDER

1. select HANDLE (eg. **0315**).
2. choose LOCKING OPTION if required (**0315LK**).
3. add GRIP ref. (**0315LK/G01**).
4. add FINISH (**0315LK/G01PB**).
5. add HANDING (**0315LK/G01PB/LH**).

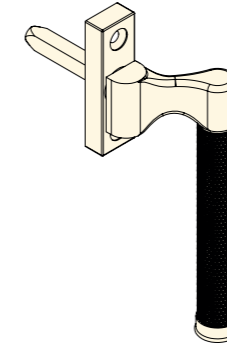
Mixed finish: select Handle, locking option if required & finish, Grip ref. & finish, then handing (eg. 0315LK/PB/G01AB/LH).

# WINDOW ESPAGNOLETTE HANDLES

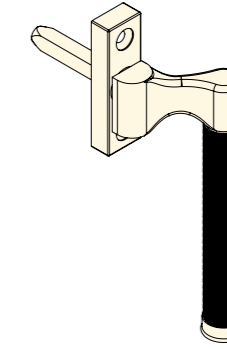
## RINGED TIP



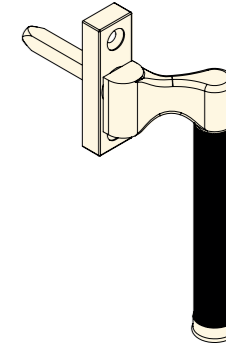
SMOOTH  
0316 G01 - 16Ø



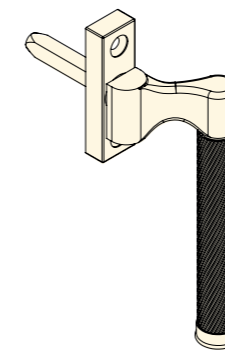
DIAMOND KNURL  
0316 G02 - 16Ø



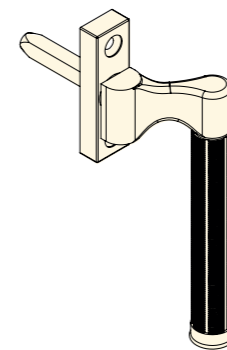
DIAMOND MESH  
0316 G03 - 16Ø



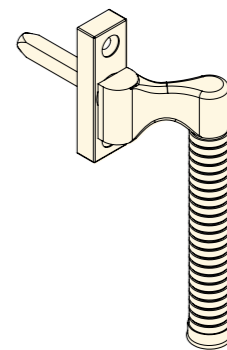
LINEAR  
0316 G04 - 16Ø



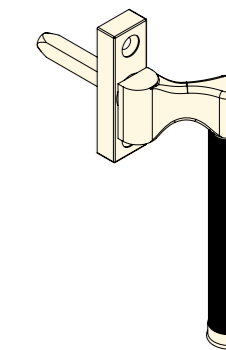
SPIRAL  
0316 G05 - 16Ø



ROTOR  
0316 G06 - 16Ø

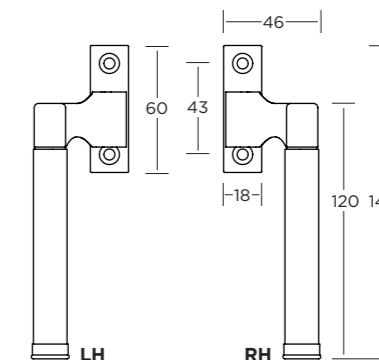
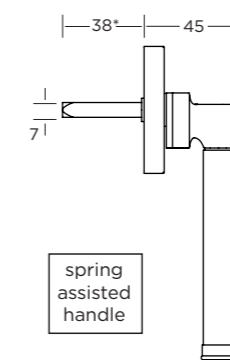
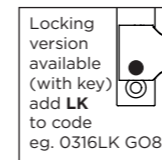


GROOVE  
0316 G07 - 16Ø



SQUARE MESH  
0316 G08 - 16Ø

Supplied with finish matched M5 x 40mm machine screws and fitted stainless steel spindle.



\* other spindle sizes available upon request

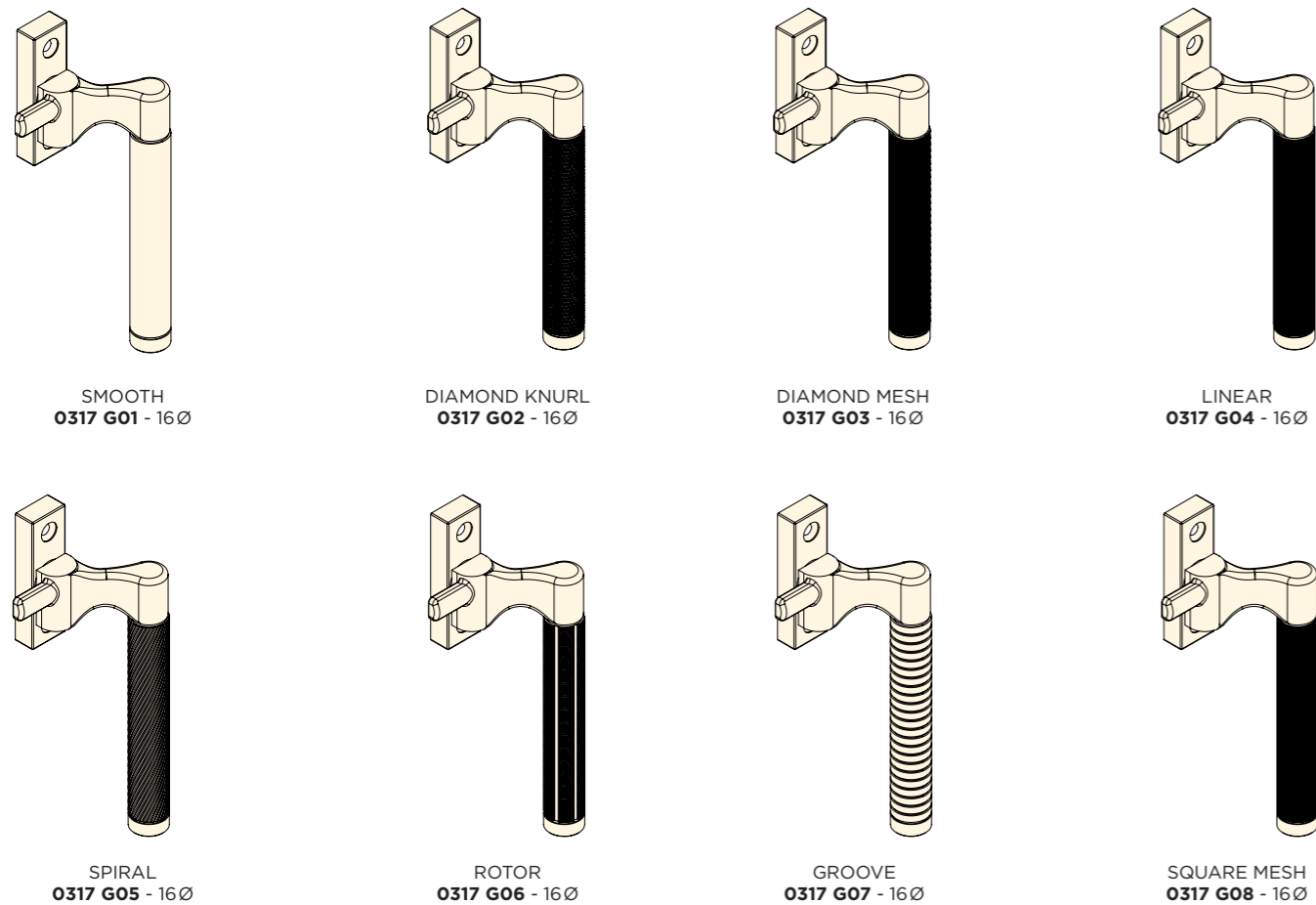
### HOW TO ORDER

1. select HANDLE (eg. **0316**).
3. choose LOCKING OPTION if required (**0316LK**).
3. add GRIP ref. (**0316LK/G01**).
4. add FINISH (**0316LK/G01PB**).
5. add HANDING (**0316LK/G01PB/LH**).

Mixed finish: select Handle, locking option if required & finish, Grip ref. & finish, then handing (eg. 0316LK/PB/G01AB/LH).

# WINDOW CASEMENT FASTENERS

## PLAIN TIP

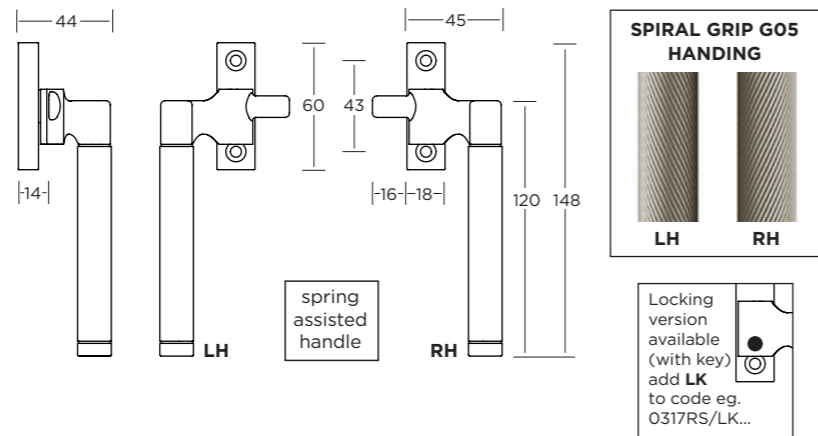


Supplied with no.8 x 25mm finish matched wood screws.

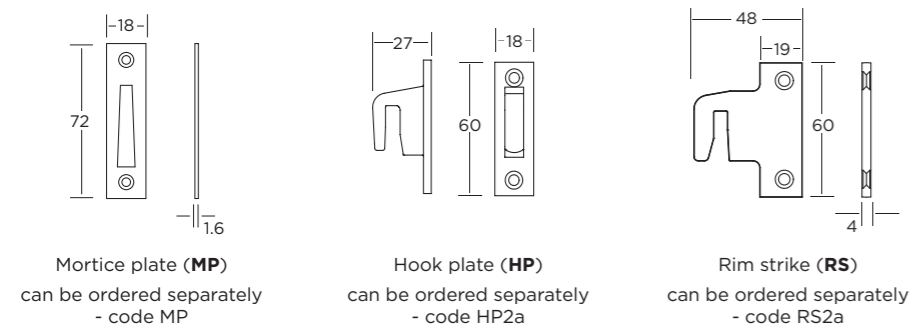
### HOW TO ORDER

1. Select FASTENER (eg. **0317**).
2. add FRAME PLATE/STRIKE (**0317RS**).
3. choose LOCKING OPTION if required (**0317RS/LK**).
4. add GRIP ref. (**0317RS/LK/G01**).
5. add FINISH (**0317RS/LK/G01PC**).
6. add HANDING (**0317RS/LK/G01PC/LH**).

Mixed finish: select Fastener code, frame plate/strike, locking option (if required) and finish, then add grip ref & finish, and finally handing (eg. **0317RS/LK/PC/G01PB/LH**).

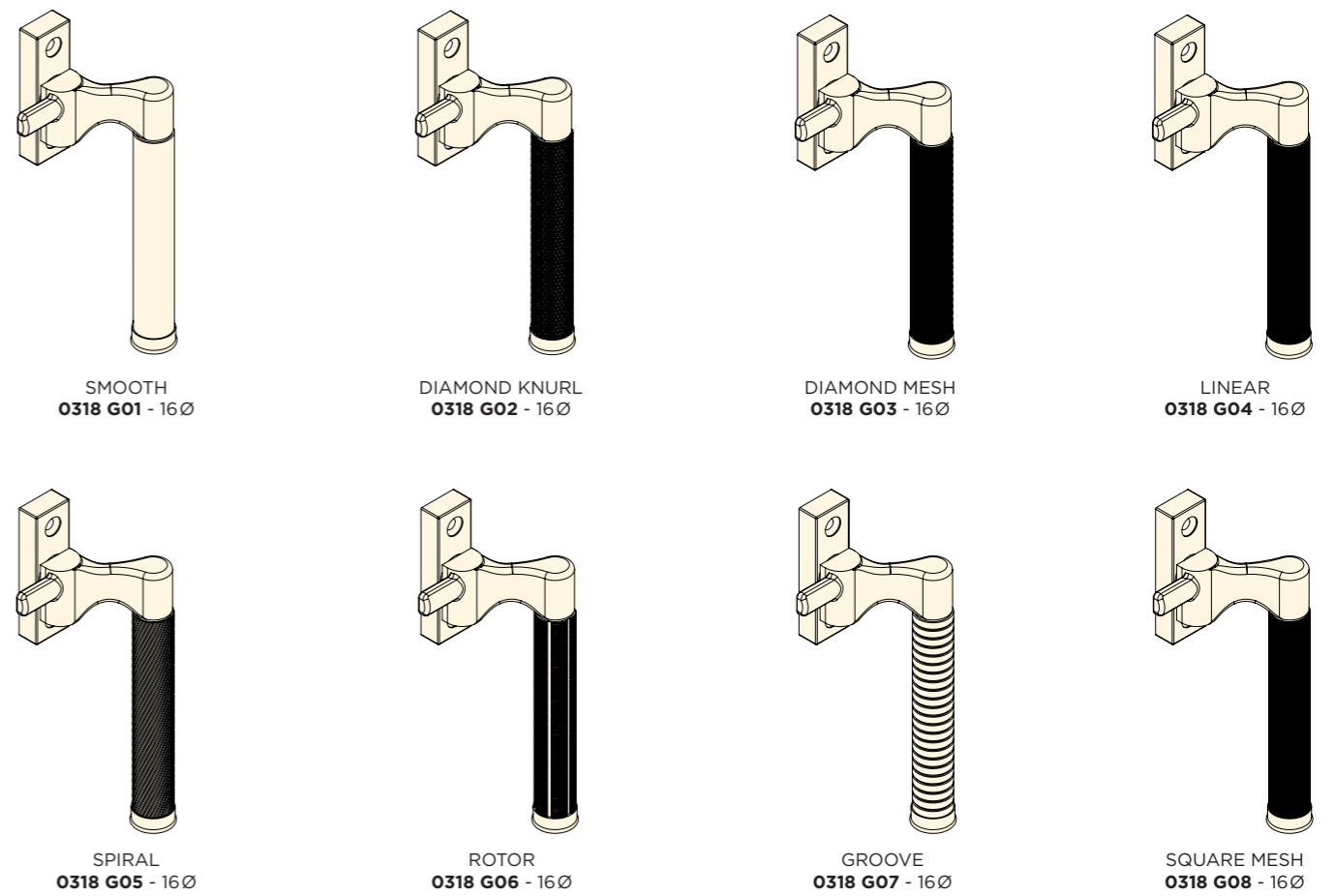


Supplied with either a mortise plate (**MP**), hook plate (**HP**), or rim strike (**RS**)



# WINDOW CASEMENT FASTENERS

## RINGED TIP

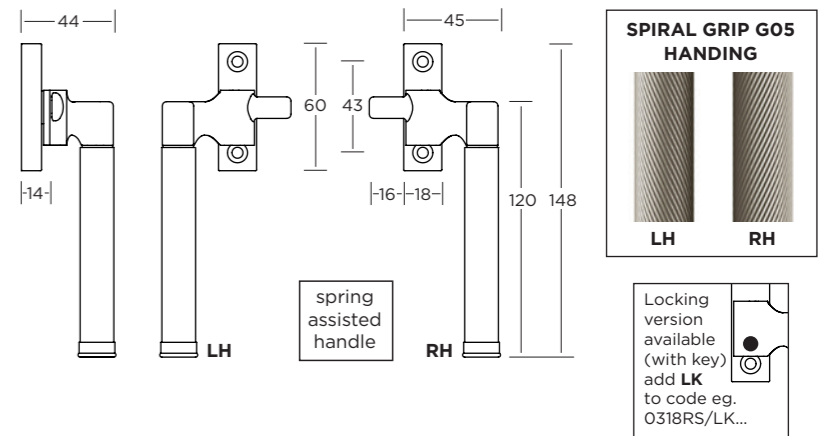


Supplied with no.8 x 25mm finish matched wood screws.

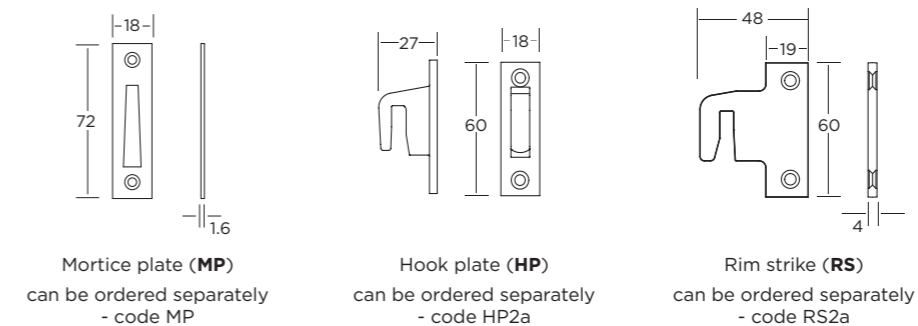
### HOW TO ORDER

1. Select FASTENER (eg. **0318**).
2. add FRAME PLATE/STRIKE (**0318RS**).
3. choose LOCKING OPTION if required (**0318RS/LK**).
4. add GRIP ref. (**0318RS/LK/G01**).
5. add FINISH (**0318RS/LK/G01PC**).
6. add HANDING (**0318RS/LK/G01PC/LH**).

Mixed finish: select Fastener code, frame plate/strike, locking option (if required) and finish, then add grip ref & finish, and finally handing (eg. **0318RS/LK/PC/G01PB/LH**).



Supplied with either a mortise plate (**MP**), hook plate (**HP**), or rim strike (**RS**)

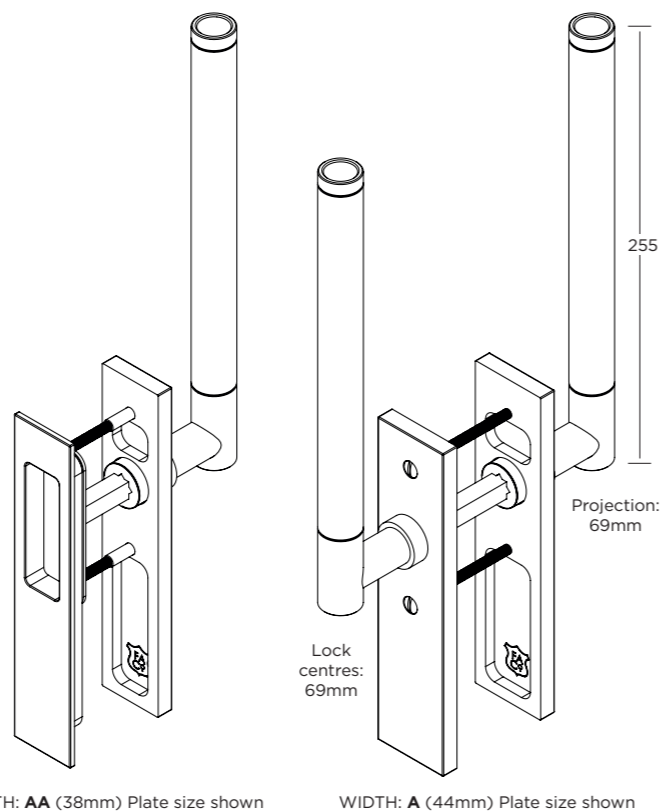


# LIFT & SLIDE HARDWARE



Lift & Slide Hardware available in all Allart Precision grip designs.

Internal and external hardware ordered separately, offering a choice of functions, and allows for different finishes inside and out.



WIDTH: AA (38mm) Plate size shown

WIDTH: A (44mm) Plate size shown

### HOW TO ORDER - Internal / External Handle

1. select PLATE DESIGN (e.g. 8148)
2. add FUNCTION code (e.g. 8148LS03)
3. add WIDTH code (e.g. 8148LS03A)
4. add HANDLE code (e.g. 8148LS03A/H46)
5. add GRIP code (e.g. 8148LS03A/H46G01)
6. add FINISH code (e.g. 8148LS03A/H46G01/PN)

Mixed finishes - please contact us for details

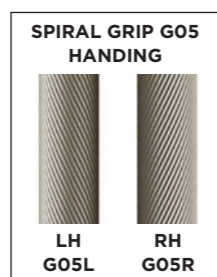


Plate Size	length	width	thickness
AA	190	38	6
A	190	44	6

### FIXINGS:

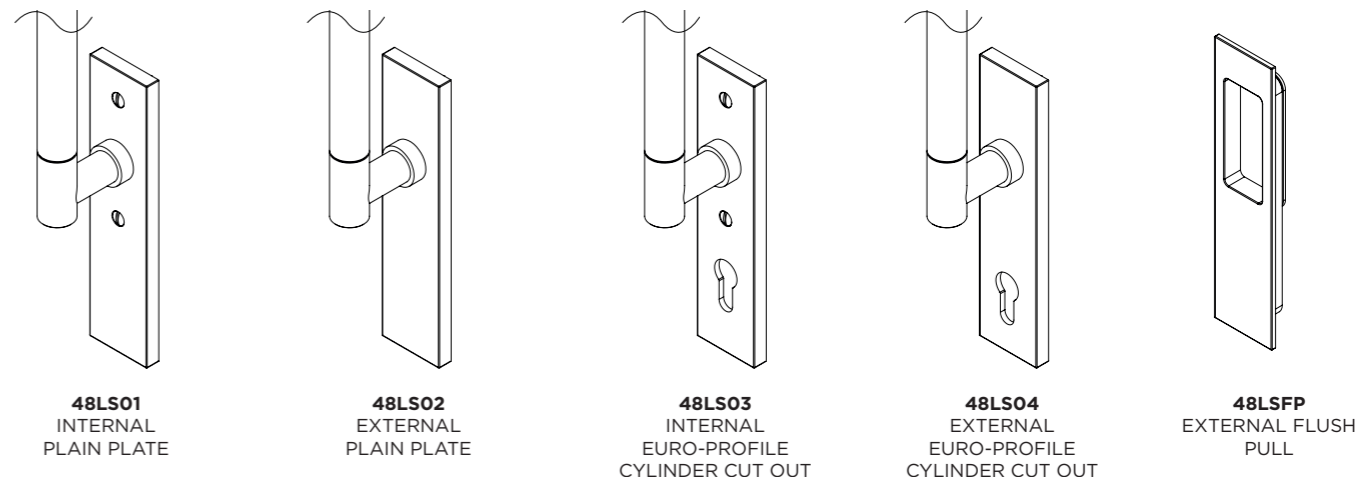
Internal lever on plate; M5 blind nuts will be supplied finish matched with M5 x 58mm allthreads for use with external Flush Pulls, and M5 x 66mm allthreads for use with external Lever on plate.

Two spindles will be supplied with internal Lever on plate 10mm square x 76mm for use with external Flush Pulls and 10mm square x 125mm for use with external Lever on plate.

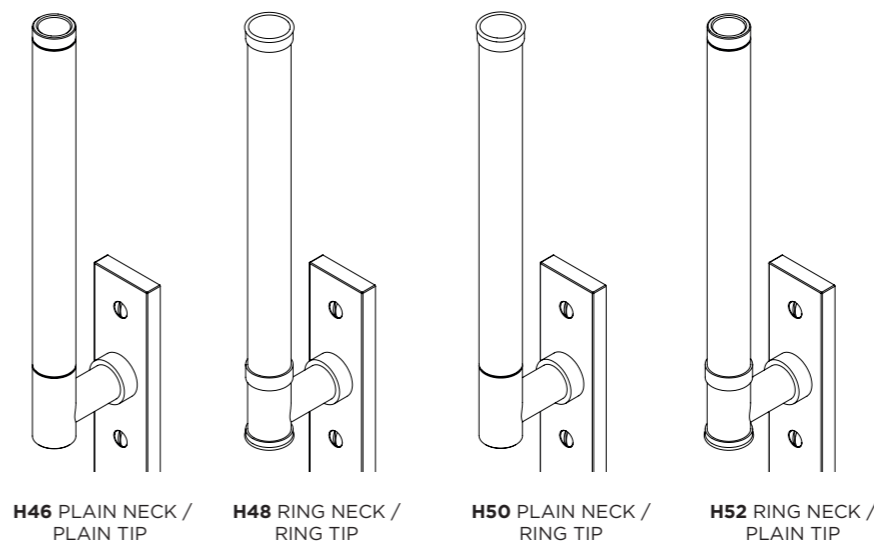
Above will suit doors between 57mm to 68mm thick.

Allthreads and spindles for thicker doors available on request.

### FUNCTION CODE

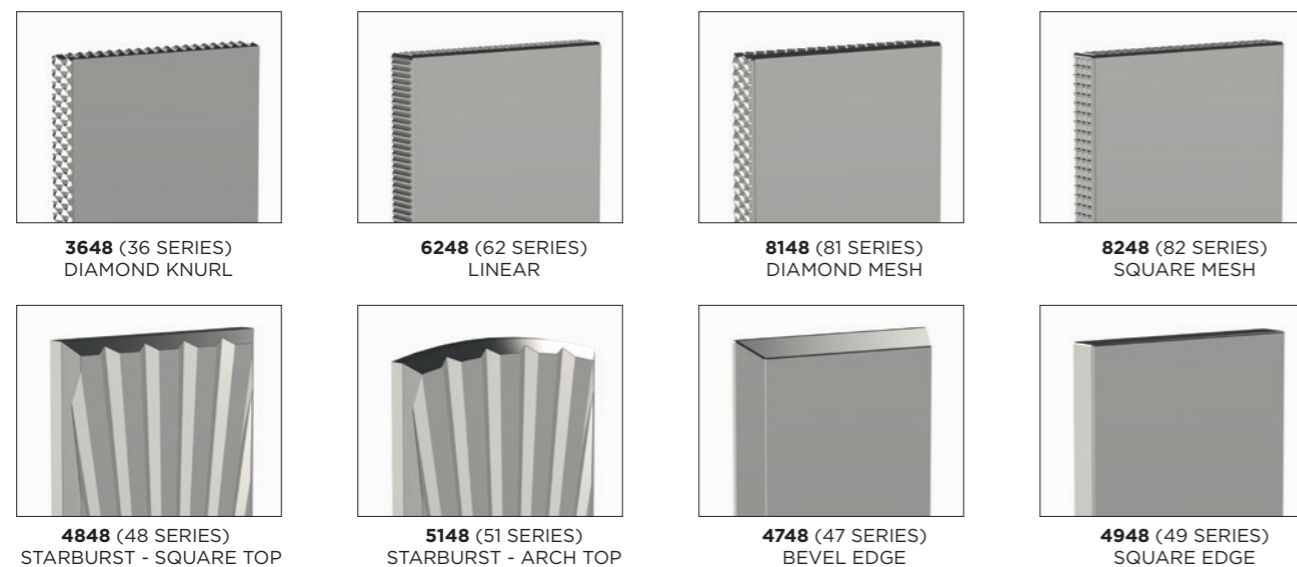


### HANDLE DESIGN

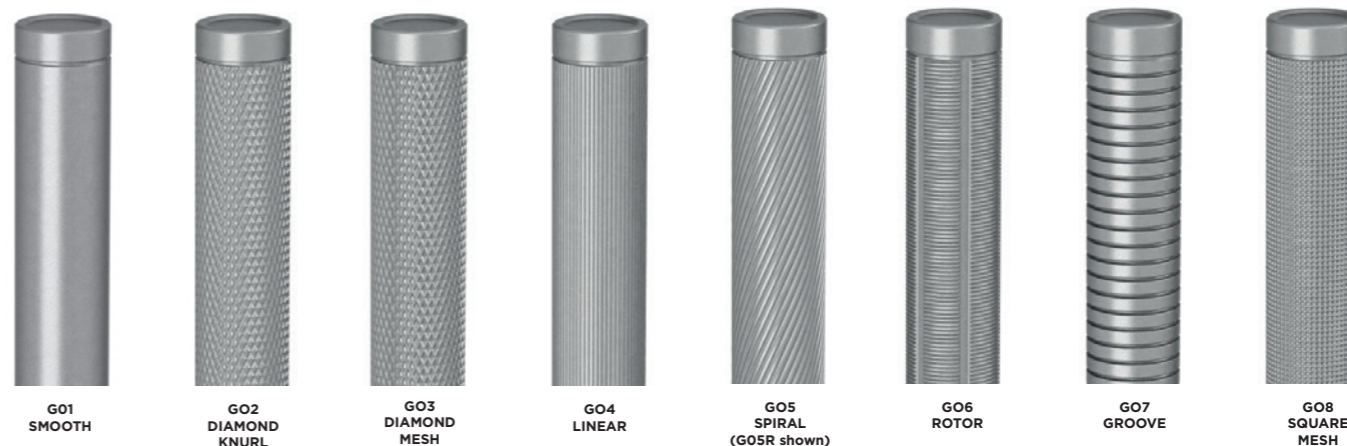


External Flush Plate 4948LSFP/A (left) & Internal Plain Plate 4948LS01/A/H46G01 shown in Matt Black Chrome

### PLATE DESIGN



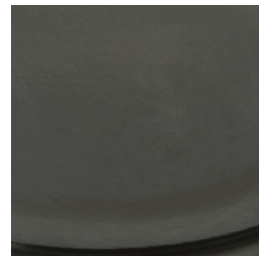
### GRIP DESIGN



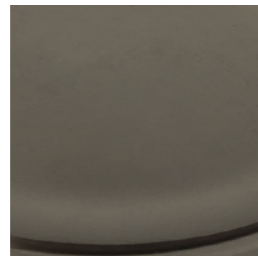
## METAL FINISHES & PATINAS

Our metal finishes and patinas are skillfully created and applied by our experienced craftspeople to the highest possible standards. Colour and texture variation is inherent in the creation of hand finished patinas; and once installed, touch, time and environment should lead to gradual wear and oxidization, lending character and elegance.

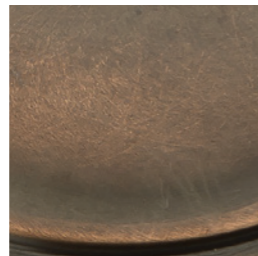
Whilst the images provide a good representation of our finishes, to assist the specification process, metal swatches and actual product samples may be made available upon request.



Ebony Bronze  
(EBB)



Dark Matt Bronze  
(DMB)



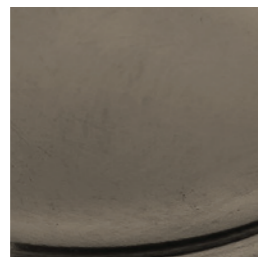
Chestnut Bronze  
(CHB)



Hand Burnished Brass  
(HBB)



Imperial Brass  
Lacquered (IB)



Imperial Brass  
(IBU)



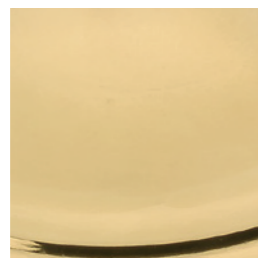
Antique Brass  
Lacquered (AB)



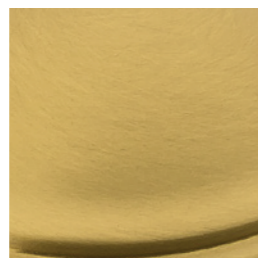
Antique Brass  
(ABU)



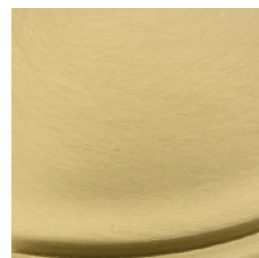
Polished Brass  
Lacquered (PB)



Polished Brass  
(PBU)



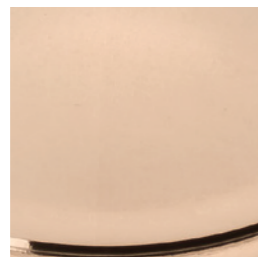
Satin Brass  
Lacquered (SB)



Satin Brass  
(SBU)



Polished Copper  
Lacquered (PK)



Polished Copper  
(PKU)



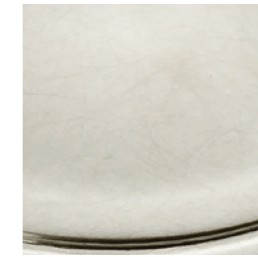
Satin Copper  
Lacquered (SK)



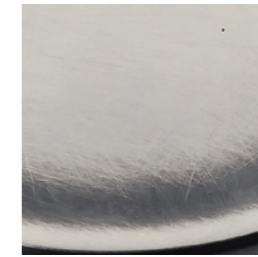
Satin Copper  
(SKU)



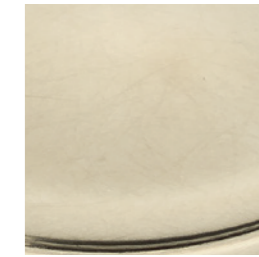
Polished Silver  
(SP)



Butlers Silver  
(BS)



Antique Silver  
(AS)



Hand Burnished Nickel  
(HBN)



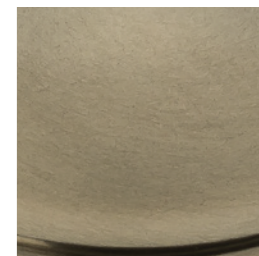
Satin Nickel  
(SN)



Polished Nickel  
(PN)



Pearl Nickel  
(PRL)



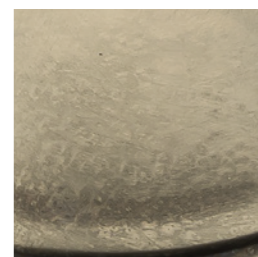
Satin Nickel - Bronzed  
(SNB)



Matt Black Nickel  
(MBN)



Polished Black Nickel  
(PBN)



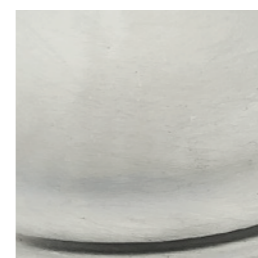
Antique Nickel  
(AN)



Antique Nickel  
Distressed (AND)



Polished Chrome  
(PC)



Satin Chrome  
(SC)



Pearl Chrome  
(PRC)



Matt Black Chrome  
(MBC)



Rose Gold  
(GRS)







Makers of fine English hardware

Frank Allart & Company Ltd.,  
Head Office & UK Factory: 15/35 Great Tindal Street, Birmingham B16 8DR UK

UK Sales Office: Tel: +44 (0)121 410 6000, [sales@frankallart.co.uk](mailto:sales@frankallart.co.uk)

USA Sales Office: Tel: 888 582 9110, [sales@frankallart.com](mailto:sales@frankallart.com)

[www.frankallart.com](http://www.frankallart.com)

IMPORTANT - Due to the restrictions within the printing process, product appearances may vary to the images shown within this brochure. Actual swatch samples are available upon request.

In accordance with our policy of continual development and product improvement we reserve the right to change specifications without notice. E&OE.